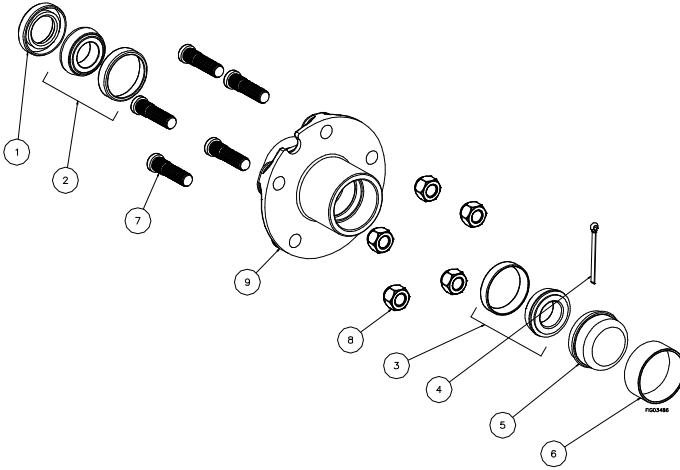


ULTRA-TOW™

Owner's Manual

Instructions for Installation and Maintenance of High Speed Trailer Hub.



Ref #	Description	QTY	#57204	#57205	#57224	#57225	#57206	#57207
1	Oil Seal	*						
2	Inner Bearing	1						
3	Outer Bearing	1	Kit#	Kit#	Kit#	Kit#	Kit#	Kit#
4	Cotter Pin	1	783927	783927	783928	783928	783929	783930
5	Dust Cap	1						
6	Dust Cap Tool	1						
7	Stud	**	Kit#	Kit#	Kit#	Kit#	Kit#	Kit#
8	Lug Nut	**	783925	783925	783925	783925	783925	783926
9	Hub	1	N/A	N/A	N/A	N/A	N/A	N/A

* Seal sizes and quantities vary per model - see Specifications

** Kit consist of 1 Stud and 1 Lug Nut. Quantities vary per model – see Specifications

⚠ WARNING

READ and UNDERSTAND this manual completely before installing and operating this trailer hub.

Improper installation and maintenance of this trailer hub could result in serious injury to the operator or nearby persons.

Any Questions, Comments, Problems or Parts Orders

Call Product Support 1-800-222-5381

Safety Information



WARNING

Carefully read and make sure you understand the following safety information before installing, and use of this trailer hub.

Improper use or maintenance of the trailer hub can result in serious injury to the operator or bystanders.

Safety – During Installation

- **Read manual.** Do not allow anyone to install this trailer hub that has not read this Owner's Manual.
- **Review safety rules.** Before towing, review the instructions for safe towing. Failure to follow these instructions may result in serious injury to the operator or bystanders.
- **Eye protection.** Always wear safety glasses or goggles during installation.
- **Clean area.** Make sure to keep the work area clean. Contaminates or water inside the hub will cause premature failure and possible wheel separation.
- **Lifting and supporting the trailer.** Follow the trailer manufactures recommendations when lifting and supporting the trailer frame. Chock trailer wheels to prevent movement, and lift at the designated jacking locations.
- **Torque values.** Always use a torque wrench when installing lug nuts and the spindle nut. Improperly torqued bolts and nuts may cause broken bolts, bearing failure, loose wheels, and possible wheel separation.
- **Attaching the Wheel.** Tighten wheel nuts in stages, start all wheel nuts by hand to prevent cross threading, then torque each nut to 20-25 ft./lbs, then torque each nut to 50-60 ft./lbs, and lastly, torque to the final wheel torque value specified by the tire manufacturer.
- **Inspection.** It is important to clean and inspect the spindle for damage prior to installing this trailer hub. If the spindle is damaged, replace the spindle before installing this hub.

Safety During Towing

- **Read instructions.** Review towing safety instructions in your towing vehicle manual.
- **Securely attached.** Check trailer hitch for signs of wear.
- **Tires.** Be sure tires are fully inflated and in good repair before towing. When adding air to tires, do not over-inflate -- serious injury could occur if tire explodes.
- **Loading the trailer.** Load the trailer so that the tongue weight is approximately 10% of the total load of the trailer.
- **Overloading.** Make sure the trailer load does not exceed the load ratings for the trailer components. This includes tires, axles, hubs, ball coupler, safety chains, and trailer design
- **Lug Nuts.** Check lug nut torque after 10 miles, 25 miles, 50 miles, and 250 miles.
- **Trailer Lights.** Make certain the brake lights, side marker lights are functional prior to towing the trailer.
- **Trailer height.** Adjust the tow vehicle tow height to ensure the trailer is being towed level.
- **Added length.** Be aware of the added length of the trailer.
- **Under the influence.** Never tow a trailer while under the influence of alcohol, drugs, or medication.
- **On public roads.** If towing on a public road, make sure to comply with all local, state, and federal towing requirements. It is the sole responsibility of the purchaser to obtain licensing, trailer lights, safety chains or signage, as needed to comply.
- **Unattended.** Turn off the towing vehicle before leaving the trailer unattended.

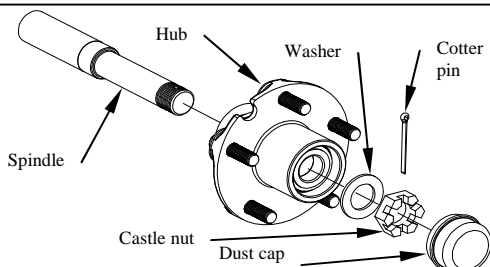
Safety – After use

- **Periodic maintenance.** Perform periodic maintenance as directed in this manual to keep the trailer hub in safe working condition.
- **Bearing Replacement.** Replace both the bearing and the bearing race any time a bearing is replaced.

Installation Instructions

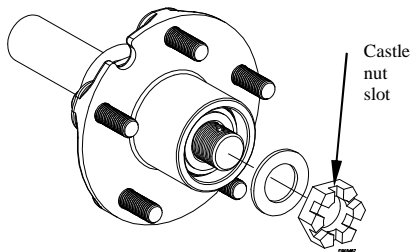
Step 1

- Remove the existing dust cap, cotter pin, castle nut, washer and hub.
- Remove any remaining grease from spindle.
- Inspect for spindle for wear or damage.



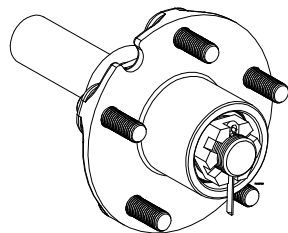
Step 2

- Slide new hub onto spindle.
- Using a torque wrench, tighten the new castle nut to 30-40 foot-lbs. Turn hub to ensure proper bearing seating
- Loosen the castle nut until loose enough to turn the castle nut with your fingers.
- Re-tighten the castle nut finger tight.



Step 3

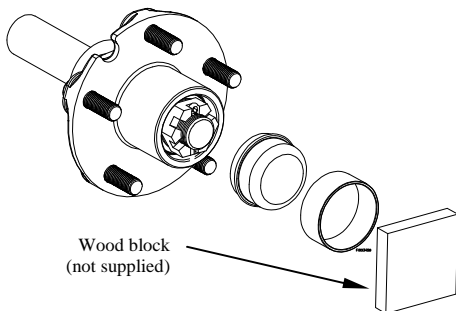
- Install cotter pin through the hole in the spindle.
- If the hole is covered by the castle nut, loosen the castle nut to the nearest hole so that the cotter pin can be installed.
- The hub should rotate freely when spun by hand, and there should be no movement when the hub is pulled back and forth.
- Bend the legs of the cotter pin to ensure the cotter pin and castle nut will not loosen.



Step 4

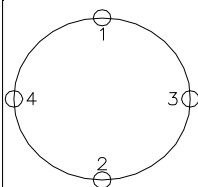
- Install the dust cap with the dust cap installation tool.
- Use a mallet or hammer, only strike the dust cap tool and not the dust cap

(Helpful hint): Place piece of wood over the dust cap tool.

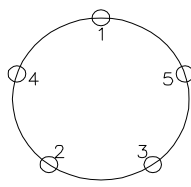


Step 5

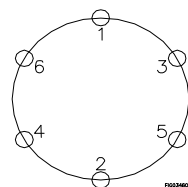
- Start all nuts by hand to prevent cross threading.
- Tighten the lug nuts in stages.
- Following the sequence and torque stages per your specific hub and wheel size.



4 Bolt Hub



5 Bolt Hub



6 Bolt Hub

Specifications, Maintenance, and Warranty

Wheel Lug nut Torque Stages

Wheel Size	1 st Stage	2 nd Stage	3 rd Stage
12in.	20-25 ft./lbs.	35-40 ft./lbs.	*60-75 ft./lbs.
13in.	20-25 ft./lbs.	35-40 ft./lbs.	*60-75 ft./lbs.
14in.	20-25 ft./lbs.	50-60 ft./lbs.	*90-120 ft./lbs.
15in.	20-25 ft./lbs.	50-60 ft./lbs.	*90-120 ft./lbs.
16in.	20-25 ft./lbs.	50-60 ft./lbs.	*90-120 ft./lbs.

*Verify final torque based on wheel type and wheel manufacture recommendations.

Specifications

Item Number	#57204	#57205	#57224	#57225	#57206	#57207
Rating(lbs.)	1250 lbs.	1250 lbs.	1350 lbs	1350 lbs	1750 lbs	2750 lbs
Number of Studs	4	5	4	5	5	6
Bolt Circle	4in.	4-1/2in.	4in.	4-1/2in.	4-1/2in.	5-1/2in.
Spindle Type	Straight	Straight	Straight	Straight	Tapered	Tapered
Inner Bearing/Cone	L44643	L44643	L44649	L44649	L68149	25580
Inner Race/Cup	L44610	L44610	L44610	L44610	L68111	22520
Outer Bearing/Cone	L44643	L44643	L44649	L44649	L44649	15123
Inner Bearing/Cone	L44610	L44610	L44610	L44610	L44610	15245
Oil Seal Diameter	1.25in.	1.25in.	1.25in./1.50in.	1.25in./1.50in.	1.72in.	2.13in./2.25in.

Grease Specification

Soap Type	Lithium Complex
NLGI Grade	#2
Dropping Point	230°C (446°F)
Additives	Corrosion and Oxidation inhibitors, EP optional
Viscosity Index	80 Minimum

Maintenance

Item	Function Required	3 Months or 1000 Miles	12 Months or 6000 Miles
Bearings	Inspect for wear, clean and repack		•
Seals	Inspect for leakage, Replace in worn		•
Spindle Nut	Check torque value and tightness		•
Wheel Nuts	Check torque value	•	

Warranty

Ultra-Tow products are warranted to be free from defects in workmanship and material under normal service and use for two years from the date of shipment. This limited warranty shall not cover any damage resulting from: 1) Abuse, improper installation, repair or modification including improper wheel nut torque. 2) Overloading. 3) Damage resulting from the vehicle being involved in an accident or a natural disaster. 4) Failure to perform proper maintenance. This warranty is limited to replacement of defective parts, if any, and does not cover consequential damage to property or persons.

ULTRA-TOW™

Distributed by
Northern Tool + Equipment Co., Inc.
Burnsville, Minnesota 55306-6936
Made in China

MHUB Rev. A.2