



## ITEM# 3343108 Miter Saw Stand USER'S MANUAL



Read carefully and understand all **ASSEMBLY AND OPERATION INSTRUCTIONS** before operating.  
Failure to follow the safety rules and other basic safety precautions may  
result in serious personal injury.

For technical questions and replacement parts, please call 1-800-222-5381.

Thank you very much for choosing a NORTHERN TOOL + EQUIPMENT CO., INC. Product! For future reference, please complete the owner's record below:

Model: \_\_\_\_\_ Purchase Date: \_\_\_\_\_

Save the receipt, warranty and these instructions. It is important that you read the entire manual to become familiar with this product before you begin using it.

This machine is designed for certain applications only. Northern Tool + Equipment strongly recommends that this machine is not modified and/or used for any application other than that for which it was designed. If you have any questions relative to a particular application, DO NOT use the machine until you have first contacted Northern Tool + Equipment to determine if it can or should be performed on the product.

Before using this product, please read the following instructions carefully.

#### TECHNICAL SPECIFICATIONS

Item	Description
Max. Loading Weight	440 Lbs.
Product Dimension	55" x 22" x 29"
Wheel Size	7 inches
Max. Length	9 feet

#### SAVE THIS MANUAL

You will need this manual for the safety warnings and precautions, assembly, operating, inspection, maintenance and cleaning procedures, parts list and assembly diagram. Keep this manual and invoice in a safe and dry place for future reference.

#### ⚠ WARNING!

1. Fully assemble and tighten all fasteners. Remember to check the stand periodically to make sure everything is tight. A loose stand is unstable and may shift during use and cause serious injury.
2. Turn tool switch off and disconnect power before mounting to the stand.
3. Do not add extra weight to the stand during the operation.
4. Before operating, make sure the entire unit is placed on a solid, level surface. Serious injury can occur if tool with stand is unstable and tips.
5. Never stand on saw stand or use as a ladder or scaffolding.
6. Before use, verify that all parts or components of the stand are properly installed, free from damage and/or deformity, and the miter saw is firmly mounted to the stand.
7. Before folding, pay attention to the position of the Crimple guide (#13) to avoid any interference during folding.
8. After folding, be sure to insert the bolt (#15) into the working table (#1) and the rear supporting stand (#5).
9. During operation, be sure to insert the bolt (#15) into the rear supporting stand (#5).
10. Keep work area clean. Clutter invites accidents.
11. Always wear safety glasses when operating the miter saw
12. Do not modify the miter saw stand in any manner or use the stand for any purpose other than its intended purpose.

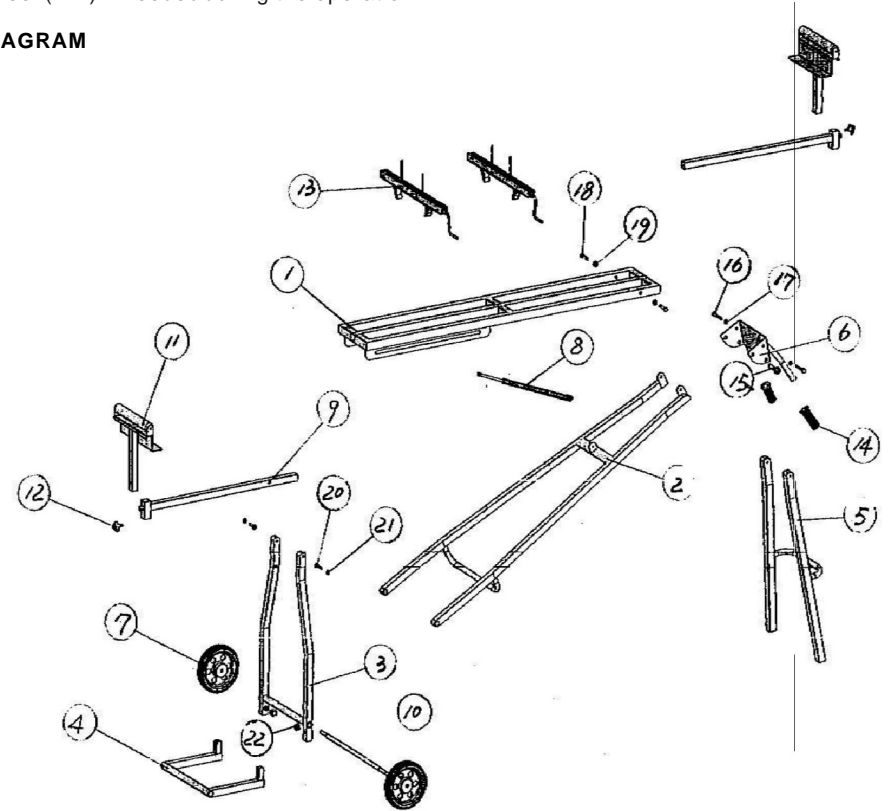
#### ASSEMBLY

1. Assemble the wheel (#7) onto the wheel shaft (#10) and affix to support stand (#3).
2. Insert the Bottom stand (#4) into the pipe of front supporting stand (#3). Screw it by the handlebar (#22).
3. Release the bolt (#15), and fully spread the stand.
4. Insert the Extension Rod (#9) into the pipe of the working table (#1).
5. Insert the Idler wheel (#11) into the pipe of the Extension Rod (#9).
6. Fix the Crimple guide (#13) onto the working table (#1).

#### OPERATION

1. Per the hole size of your miter saw, adjust the distance between two Crimple guide (#13). So does two bolts (#15) on the crimple guide (#13). Fix your miter saw onto the Crimple guide (#13).
2. Adjust the working length through the Extension Rod (#9) & the height through the Idler wheel (#11) if needed during the operation.

#### DIAGRAM



#### PART LIST

Part#	Description	Qty.	Part#	Description	Qty.
1	Working table	1	12	Crimple screw	1
2	Wheel stand	1	13	Crimple guide	1
3	Front Supporting stand	1	14	Handle grip	2
4	Bottom stand	1	15	Bolt	1
5	Rear supporting stand	1	16	M8 Bolt	1
6	Turning stand	1	17	M8 Nut	1
7	Wheel	2	18	M10 Bolt	1
8	Spring	1	19	M10 Nut	1
9	Extension Rod	1	20	Bolt	1
10	Wheel Shaft	1	21	M8 Nut	1
11	Idler wheel	2	22	Handle Bar	1