

Troubleshooting and Frequently Asked Questions

The transmitter lights up with motion, but the receiver does not react

The transmitter must be taught to the base unit, as explained in step 3 in the Set-Up guide. If the unit was taught, the most common reason for not working is that the base unit has been turned off, or muted. Press the MUTE button on the top of the base unit. If it doesn't start working, press the MUTE button again, to wake the unit up and look at the two small white switches next to the LEARN button. The #1 white dipswitch, should be down, towards the circuit board. If it is UP, the unit has been muted.

The transmitter is not getting the expected range

To assure best range; **A:** Keep both antennas VERTICAL. **B:** Keeps the PIR Transmitter antenna away from trees and metal objects (at least 3"). **C:** Locate the Receiver near a window with the clearest possible sight of the PIR Transmitter. The less number of objects between the devices, the longer the range.

I cannot hear the receiver when it signals

The receiver is not made to be overly loud. If you need to have a louder signal, the receiver has a relay for attaching accessories, such as bells, buzzers, or lights. The relay is a switch that has no power of it's own, but can handle up-to 120 volts at 10 amps through it. The relay is essentially an automatic switch and has no power of its own.

The transmitter is picking up people, but not cars

For best results, when detecting cars, adjust the sensor to look at a 45-60 degree angle, have it about the height of the car's hot motor, and set it back far enough so the cars don't pass within five feet. It can help top have it looking at the back of the car, after driving past the sensor, to see the car's hot exhaust.

Sensitivity settings

There are two switches located, next to the test button, on the circuit board inside the transmitter. The REPORTER is shipped pre-set to its highest level of sensitivity, with the switches DOWN, towards the circuit board. If you are experiencing false alarms, the unit may need to be set to be less sensitive.

SW 1: Sensitivity to motion
ON = High OFF = Low

SW 2: Sensing distance from unit
ON = 5-25 Feet OFF = 5- 15 Feet

There is a short beep every ten minutes

The Receiver is indicating that the **Battery is LOW**. Remove the cover on top of the Receiver by simply pulling the top and bottom halves apart. Replace the 9V battery with a fresh alkaline battery or just operate it without a 9V battery.

If you have installation or operation questions, please see above or check out the expanded FAQ at the manufacturer's web page at www.internationalelect.com

You can receive free technical assistance on the web at techsupp@nwlink.com

For Warranty email or call 888.679.7994 Tuesday-Friday 8:00-5:00 PST

Warranty: This product is warranted to be free of defects for the period of **One Year** from the date of purchase. **The warranty covers parts, labor, and return shipping to you, but not all accessories.** IEI will repair or replace any defective product at our discretion. Warranty does not cover misuse or damage other than due to normal operating conditions. If you need to send the system to IEI for repair, contact IEI for a **Return Authorization number via email: techsupp@nwlink.com** Packages without Return Authorization number will be rejected.

THE **REPORTER**

WIRELESS ALERT SYSTEM

PIR-300
Transmitter



New!

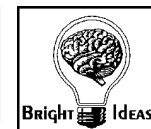
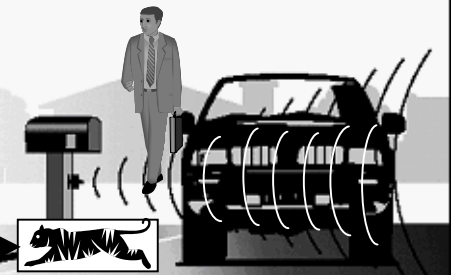
- *Ultra Long Range*
- *Crystal Controlled*
- *Sun/Rain Shield*

Thank you for purchasing an extra transmitter for the Reporter Wireless Alert. This product has been designed and manufactured in the USA, utilizing the highest quality standards available. The Reporter has been designed to detect and report motion from people and vehicles, while allowing animals to pass through undetected.

Please read the instructions carefully.

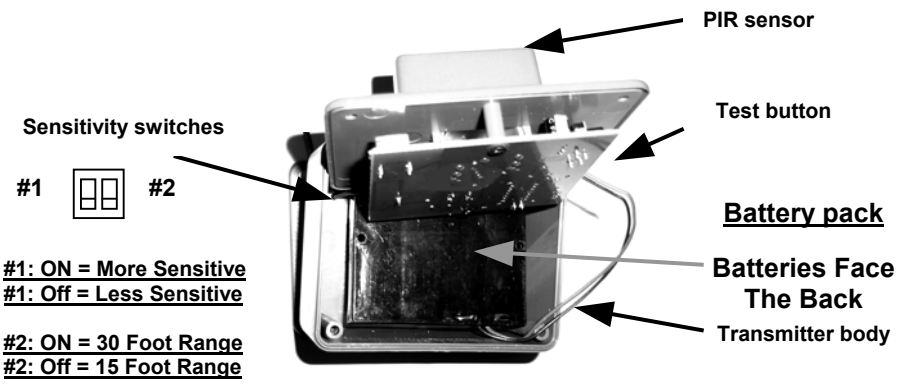
Uses Include...

- **Driveways**
- **Deck & Patio**
- **Storefronts**
- **Barn or Shop**
- **RVs, while at home**
- **Pools or area security**
- **Home / Office Security**
- **Ignores Animals**



International Electronics, Inc.

Made With Pride In the USA. This product is covered by a manufacturer's full One Year Warranty.



1: Assemble the Transmitter Mounting Bracket

Insert the 1" screw (The single larger screws provided in the kit) through the Swivel Bushing (supplied in the plastic bag), then through the Plate and the Shell. Tighten just enough to allow the plate to still move, but there should be no "slop" in the movement.

2: Install Batteries in the Transmitter

Place four AA Alkaline batteries in the battery pack (Use only high quality batteries for longest performance), the LED Light in the PIR window will flash several times to show a successful systems test. The batteries should last for over Two years with average use. **Important ***** Set the battery pack into the transmitter body, so the plastic back is facing the outwards.

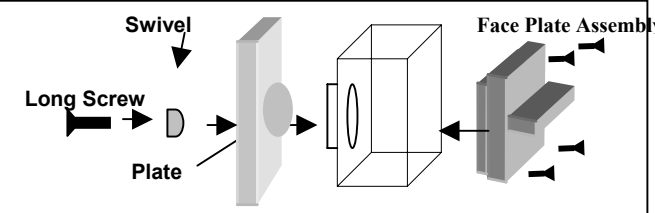
3: Introduce the Transmitter to the Base Unit

Before the Reporter will operate, you have to teach the PIR Transmitter to the Receiver (Each PIR Transmitter has its own unique ID, so that the Radio Link is Secure). Locate the Learn button on the back of the Receiver unit. Locate the TEACH button on the PIR unit; (this is a small round pushbutton, visible from one edge of the PIR transmitter PCB).

- A: Press and release the **LEARN button on the receiver**, the buzzer should sound.
- B: Within 5 seconds, press and release the **TEST button on the PIR transmitter** (If you cannot locate this button on the PIR Transmitter, simply wave your hand in front of the detection window instead), the buzzer should sound again. If it does not, repeat steps A and B. As of this time, the Receiver should respond to motion detected by the sensor.

4: Finish Assembly Of PIR Transmitter

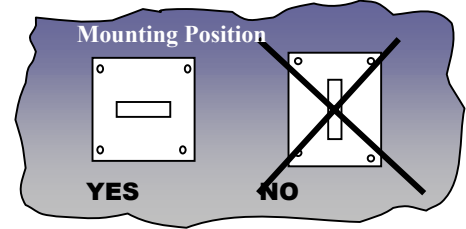
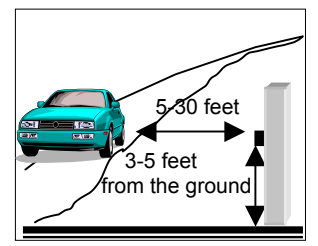
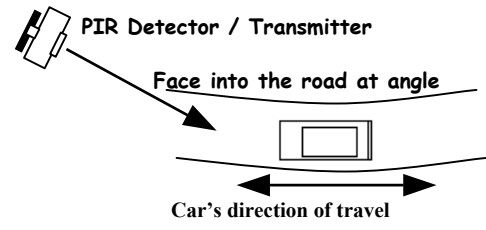
- A: As instructed in step 2 above, make sure you have Installed the Battery Pack into the housing, facing the BATTERIES TO THE BACK OF HOUSING. With the batteries installed, you should only be able to see the plastic back of the battery pack.
- B: Position the Face Plate Assembly so that the Black Antenna Wire is located next to the Notch Marked "Antenna Here".
- C: Install the 4 screws provided into front holes and tighten.
- D: If desired, place the optional sun/rain shield on to the top of the transmitter by clipping it onto the mounting bracket joint.



Mount the plate to the back using the swivel and long screw provided. Tighten enough to remove any slop in the assembly and yet allow for some movement of the plate when installed. After installing the batteries, insert the battery pack with the batteries facing the back.

Mounting the transmitter

Mount the PIR Transmitter onto a solid surface (Should not shake with wind) 3-5 feet above the ground (depending on the height of the object being detected). For cars, the best mounting position is at about 3', Looking at the back of the car after passing the sensor, to see the hot exhaust. Swivel the unit so it gets the best possible view across the path of movement, keeping it as close to horizontal as possible. To detect small animals, the sensor has to be mounted low enough to see them, usually within a foot of the ground.



Multiple transmitters or receivers

Each receiver can operate with up to four transmitters, with distinctive signals for each. Additionally, multiple receivers can work with the same transmitters to sound the alarm in different places. Just teach each additional transmitter to the receiver, as with the first one.

