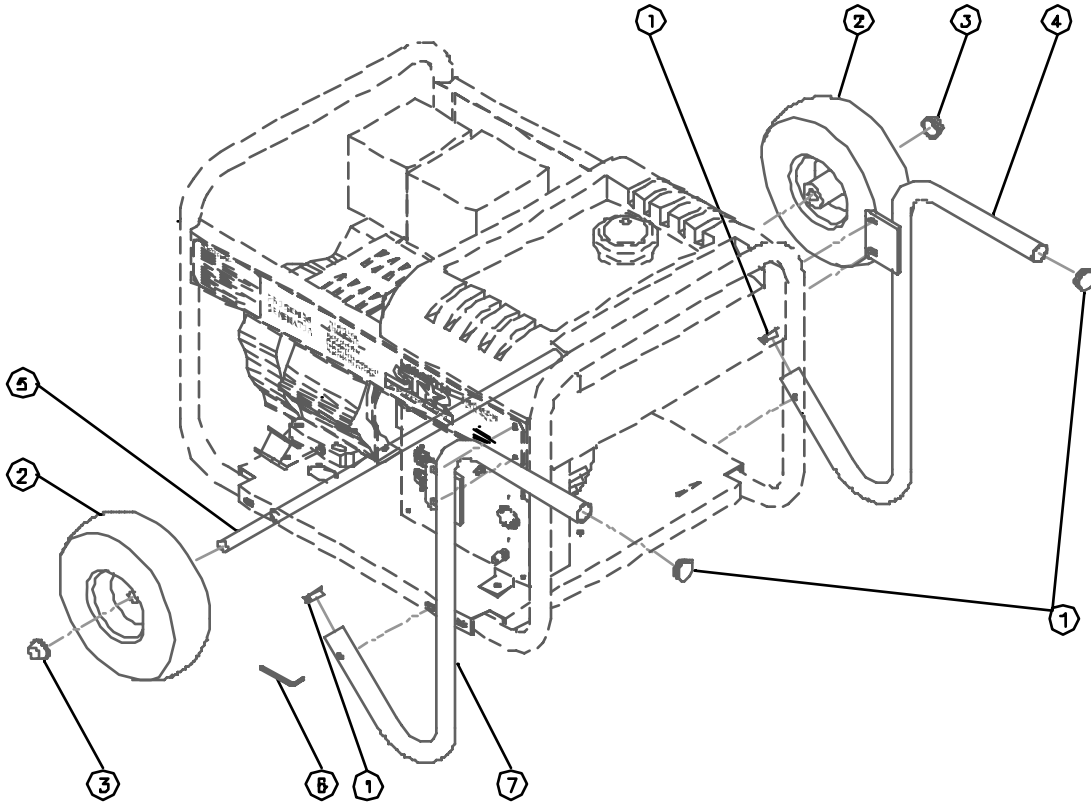




Generator Wheel Kit
ITEM # 165916
For use on 5500 and 8000 PPG
or IPG North Star Generators

M165916C



OWNER'S MANUAL

00029

COMPONENT LIST			
Ref.	Item #	Description	Qty.
1	30748	Handle end cap	4
2	2278	10" Pneumatic wheel	2
3	157163	Hub cap	2
4	305515	Right handle	1
5	305512	Solid steel axle	1
6	30749	3/16" Allen wrench	1
7	305516	Left handle	1

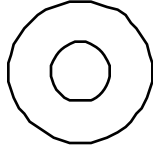
STEP 1

- Open hardware bag and separate the components.

FASTENERS (actual size)



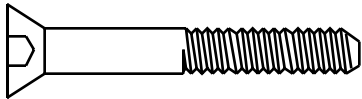
1/4-20 X .75" Long
Hex head bolt Qty. 4



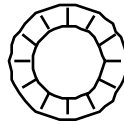
1/4" Flat washer
Qty. 4



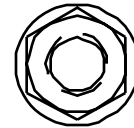
1/4" Lock washer
Qty. 4



5/16-18 X 1.75" Long
Flat head bolt Qty. 2



5/16" Star washer
Qty. 2



5/16" Flange nut
Qty. 2

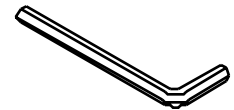
MISCELLANEOUS COMPONENTS (not actual size)



Hub Cap
Qty. 2



Handle End Cap
Qty. 4

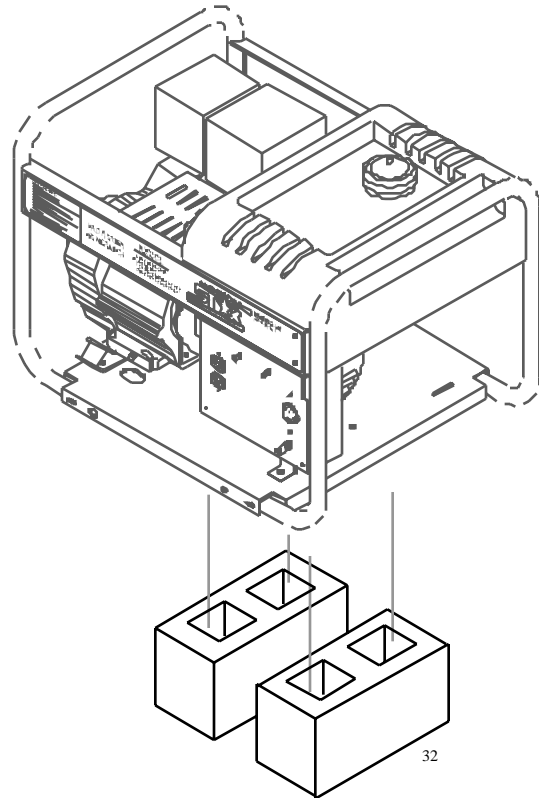


3/16" Allen Wrench
Qty. 1

00030

STEP 2

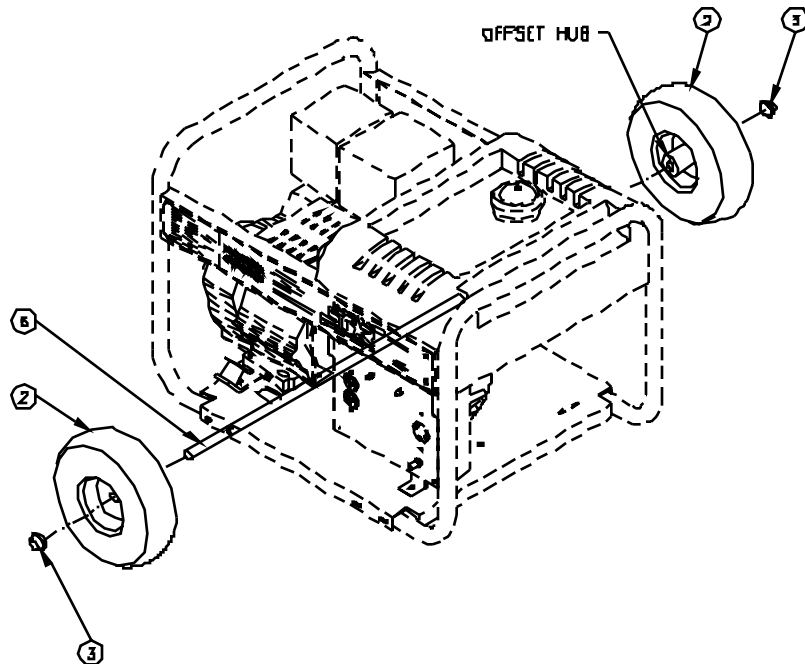
- If the generator is still on the pallet it was shipped on, proceed to Step 3. If not, secure the generator on blocks that are at least 7" tall. Make sure the space between the two axle holes are not obstructed.



STEP 3

Note: Tires may require periodic inflation.

- Tap one hub cap (3) onto the axle using a hammer.
- Slide one wheel (2) onto the axle (6), so that the offset hub is opposite the hub cap (3).
- Slide the axle (6) through the two holes on the base.
- Slide the second wheel (2) on the axle (6).
- Grasp the axle (6) to prevent it from sliding as you tap on the second hub cap (3).

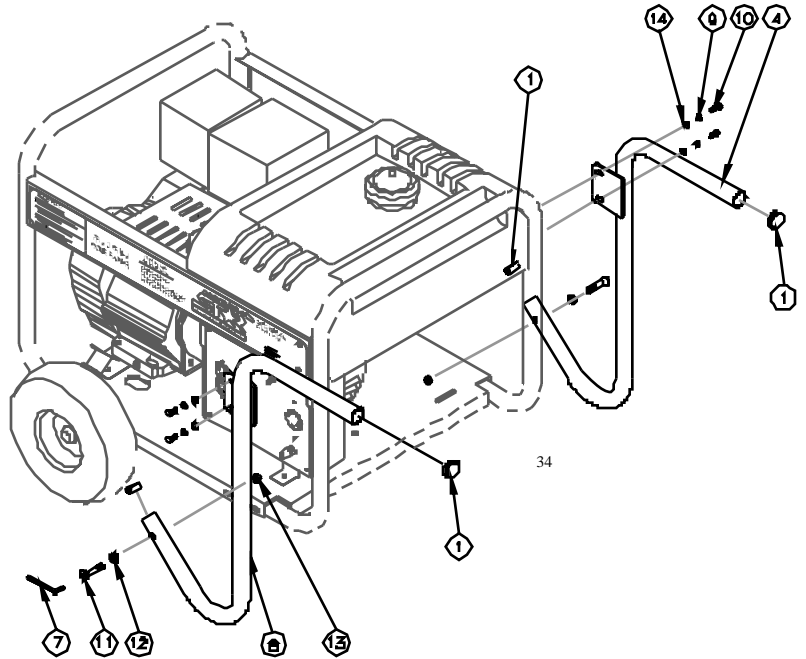


00033

Ref.	Item #	Description	Qty.
2	2278	10" pneumatic wheel	2
3	157163	Hub cap	2
6	305512	Solid steel axle	1

STEP 4

- Insert one 5/16" bolt (11) with star washer (12) through each handle (4)(8). Tighten the nut (13) fingertight only.
- Puncture the side panel stickers with a Phillips screw driver so that the 1/4" bolts (10) can be inserted. The area to be punctured will look like dots that are a shade whiter than the surrounding area.
- Insert the four 1/4" bolts (10) with a 1/4" lock washer (9) and 1/4" flat washer (14) through the handle mount plates. Torque to 9 ft-lb.
- With the 3/16" Allen wrench provided (7), tighten the 5/16" bolts (11). Do not collapse the tube.
- Remove the blocks from under the generator.
- Snap the handle end caps (1) into the handles (4)(8).



Ref.	Item #	Description	Qty.
1	30748	Handle end cap	4
4	305515	Right handle	1
7	30749	3/16" Allen wrench	1
8	305516	Left handle	1
9		1/4" Lock washer	4
10		1/4-20 x .75" Long hex head bolt	4
11		5/16-18 x 1.50" Long hex head bolt	2
12		5/16" Star washer	2
13		5/16-18 Flange nut	2
14		1/4" Flat washer	4