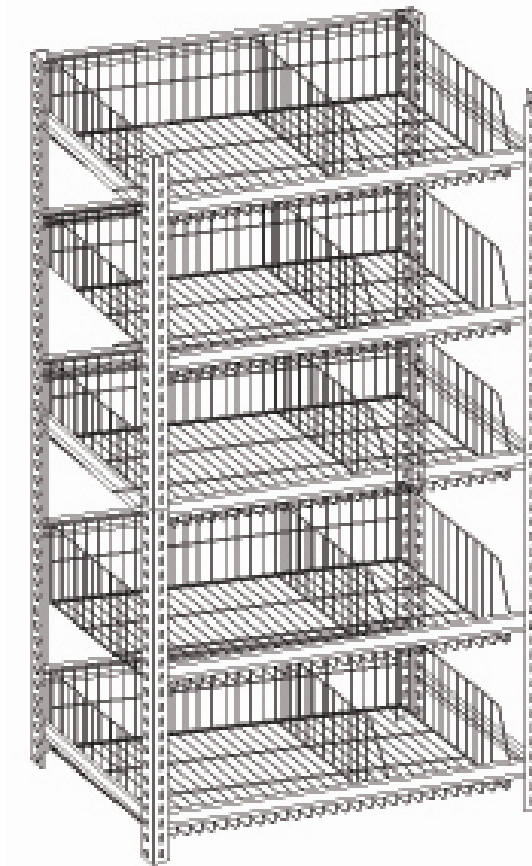




5-SHELF BASKET RACK

OWNER'S MANUAL



WARNING: Read carefully and understand all **INSTRUCTIONS** before operating. Failure to follow the safety rules and other basic safety precautions may result in serious personal injury.

Item # 150505

Thank you very much for choosing a NORTHERN TOOL + EQUIPMENT CO., INC. Product! For future reference, please complete the owner's record below:

Model: _____ Purchase Date: _____

Save the receipt, warranty and these instructions. It is important that you read the entire manual to become familiar with this product before you begin using it.

This machine is designed for certain applications only. Northern Tool + Equipment cannot be responsible for issues arising from modification. We strongly recommend this machine is not modified and/or used for any application other than that for which it was designed. If you have any questions relative to a particular application, DO NOT use the machine until you have first contacted Northern Tool + Equipment to determine if it can or should be performed on the product.

For technical questions please call **1-800-222-5381**.

SAFETY INSTRUCTIONS

Failure to abide by these instruction and safety rules may cause poor product performance and /or failure of the product and validity of product warranty.

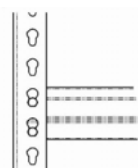
1. The storage basket rack must be assembled and used on a level surface that can support the weight of a fully loaded unit.
2. Evenly distribute the weight of load on each shelf, place the heaviest items on the bottom shelf. **DO NOT OVERLOAD. Do not exceed the maximum capacity of 200 lbs. for each shelf.**
3. **DO NOT STAND ON OR USE THE UNIT AS A LADDER.**
4. Should there ever be a need to change the level of the shelf, be sure to disassemble and reassemble one level at a time.
5. Use a mallet to drive the rivet to the bottom of slots on the post. Hit the beam close to the connection.
6. Be sure that the rivets seat at the bottom of the slot.
7. Keep children away. Do not allow them to play with or crawl/climb on unit.
8. Periodically inspect the general condition of the rack for loose frame connections, improperly distributed loads, shelving deformation and any other conditions that may affect the rack's stability and performance.

ASSEMBLY INSTRUCTIONS

Required Tools (Rubber Mallet)

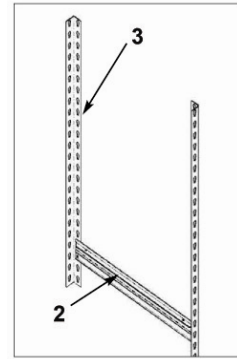
TIPS

1. The posts are directional; the slot's tapered end must face downward.
2. Tap the beams close to the connection to assure the rivets seat at the bottom of the slot.
3. When assembling the beams, the flange must face up to assure that the decking sits leveled.



Step 1:

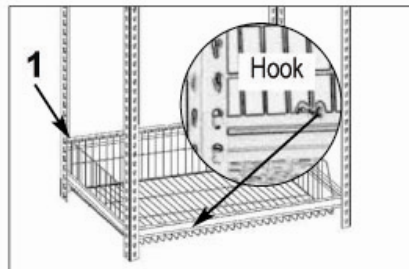
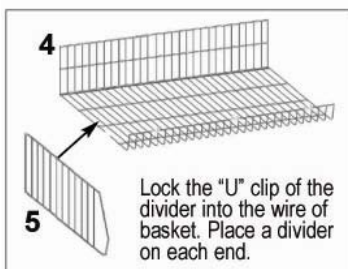
Assemble two posts (3) and one short beam (2). Use the fourth slot from the bottom of the post. Be sure the beam's flange is facing up. Tap the beams close to the connection and assure the rivets are seated at the bottom of the slot. Repeat Step 1 to assemble a second bottom side.



Step 2:

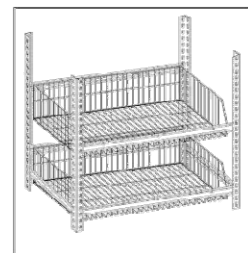
Continue the assembly by joining the two bottom sides with two long beams (1) to make a bottom assembly. The front beam should be at the same height and the back beam should be two slots higher than the side and front beams.

Place the basket over the beams, make sure the hooks hang over the beams.



Step 3:

Continue the assembly with two long beams (1) and two at the desired level to continue on the bottom of the shelf assembly. Be sure the beam flange is facing up. Tap the beams close to the connection and assure the rivets are seated at the bottom of the slot.

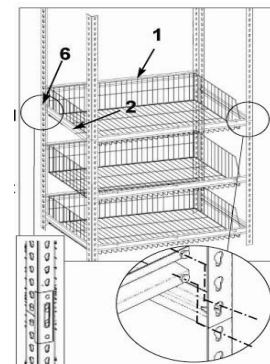


Step 4:

Continue with the assembly to add the top part of the shelf by adding four posts, (3) two long beams (1) and two short beams (2). Assure the slot's tapered end is facing downward.

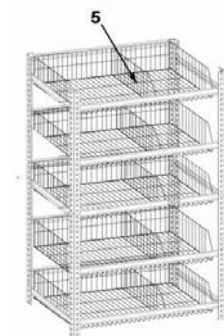
FRONT BEAM – Insert the top rivet through the bottom slot of the top post and the bottom rivet through the top slot of the bottom post (refer to detail). Hit the beam near the joint to lock into place.

BACK POST & BEAM – Place the post connectors (6) to the back posts. Place a long beam (1) 2 slots up higher than the front beam. Assemble another basket and place it over the beams.

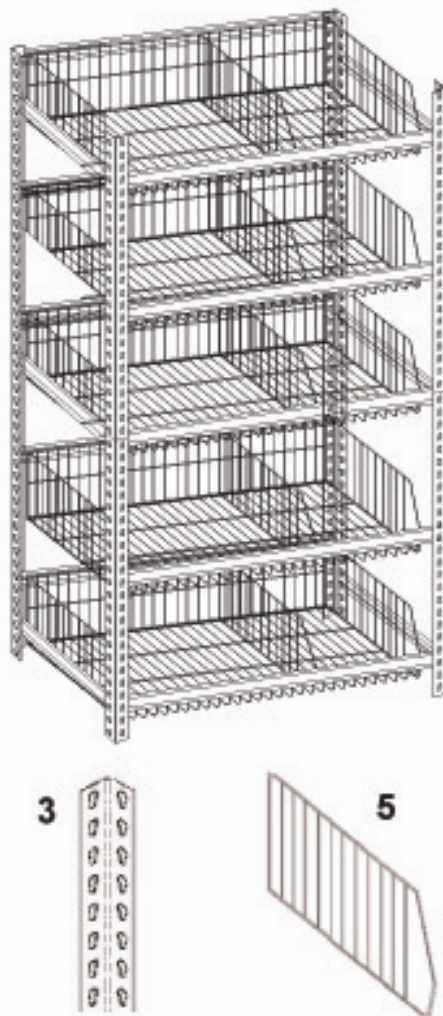


Step 5

Assemble the rest of the baskets at the desired height. Place the 5 remaining dividers where you need to separate and organize your items.

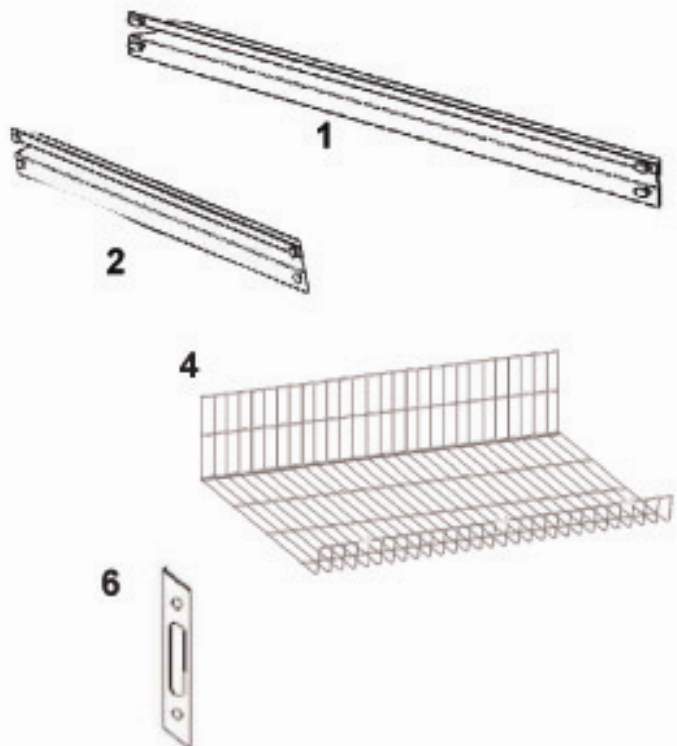


Parts List



Contents:

<u>Item.</u>	<u>Description</u>	<u>Qty.</u>
1	Long Beam (36")	10
2	Short Beam (18")	6
3	Post (36")	8
4	Basket	5
5	Side / Divider	15
6	Post Connector	2



For replacement parts and technical questions, please call **1-800-222-5381**.

One-Year Limited Warranty



Northern Tool + Equipment Co., Inc.
2800 Southcross Drive West
P.O. Box 1499 Burnsville, MN 55337-0499
Made in China