

INSTALLATION INSTRUCTIONS FOR SIERRA GRILLE GUARD KIT #295914 ON 1997-2000 DAKOTA 4X4 1998-2000 DURANGO 4X4

NOTICE

Ramsey kits are designed for use with Ramsey Winches only.
Use or sales of kits for other winches or applications voids warranty.



WARNING

Ramsey offers mounting kits and winches for various vehicles. In crash tests on a limited number of automotive manufacturer's vehicles, winches/mounting kits, which have been properly mounted, have not interfered with air bag operation.

The user/customer, or their installer, must verify that the mounting kit does not interfere with the factory air bag sensors, which must not be relocated or modified in any way.

The user/customer should follow the vehicle manufacturer's recommendations and those of a qualified mechanic to determine if the winch/mounting kit might interfere with the air bag operation. The user/customer should then determine the suitability of a winch/mounting kit on a particular vehicle.

PLEASE BE ADVISED THAT THE VEHICLE'S AIR BAG SYSTEM MAY NOT OPERATE PROPERLY IF THE WINCH/MOUNTING KIT IS NOT MOUNTED IN COMPLIANCE WITH THE VEHICLE MANUFACTURER'S RECOMMENDATIONS.

DO NOT ATTACH TOW HOOK TO ANY PART OF MOUNTING KIT UNLESS INSTRUCTED TO DO SO.

DO NOT SUBSTITUTE ATTACHING HARDWARE ITEMS (BOLTS, NUTS, OR WASHERS).

READ AND UNDERSTAND WINCH OWNER'S MANUAL BEFORE INSTALLATION AND OPERATION OF WINCH. SEE WARNING AND CAUTION.

IMPORTANT NOTES!

1. RIGHT AND LEFT HAND DIRECTIONS AS IF SEATED BEHIND STEERING WHEEL.
2. ALL FASTENING HARDWARE MUST BE LOOSELY ASSEMBLED UNTIL DIRECTED TO TIGHTEN.



**RAMSEY WINCH COMPANY
P.O. BOX 581510
TULSA, OKLAHOMA 74158**

STEP 1

Raise hood to gain access to bumper mounting bolts. Remove (2) M12 bolts that attach bumper corner bracket to outside of vehicle frame (each side).

Remove (2) M12 bolts that attach bumper to bumper hanger bracket (each side).

Remove vehicle bumper.

Remove lower body mount isolator inside vehicle frame (each side).

Remove (3) M12 nuts (each side) which attach bumper hanger bracket to inner frame. Leave bumper hanger bracket in place.

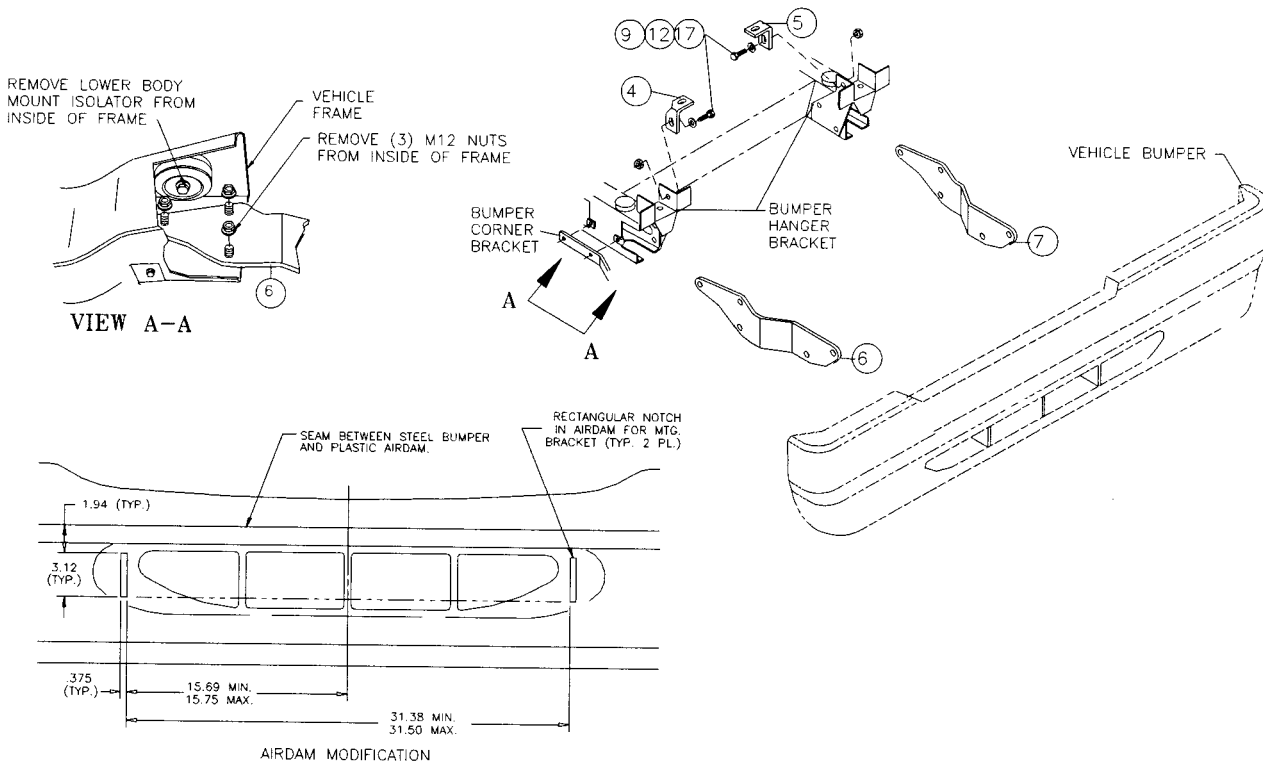
Install R.H. bracket assembly (item #6), to inside of frame, over (3) bolts on R.H. bumper hanger bracket and secure using (3) M12 nuts. See VIEW A-A. DO NOT TIGHTEN HARDWARE COMPLETELY

Install L.H. bracket assembly (item #7), to inside of frame, over (3) bolts on L.H. bumper hanger bracket and secure using (3) M12 nuts. DO NOT TIGHTEN HARDWARE COMPLETELY.

To verify your brackets were installed correctly, using tape measure, check 32" ref. dimension (as shown) to outside surfaces of winch frame brackets. Align bumper brackets equally to top of frame to ensure straightness of bumper with grille. If correct, re-install body mount isolators.

Attach upper R.H. & L.H. brackets (item #4 & #5), as shown, to bumper hanger bracket at existing hole. Use (1) 3/8-16NC x 1-1/4 lg. Hx.Hd. capscrew with washer and nut (each side). DO NOT TIGHTEN HARDWARE COMPLETELY.

Modify airdam as shown below. Re-install vehicle bumper.



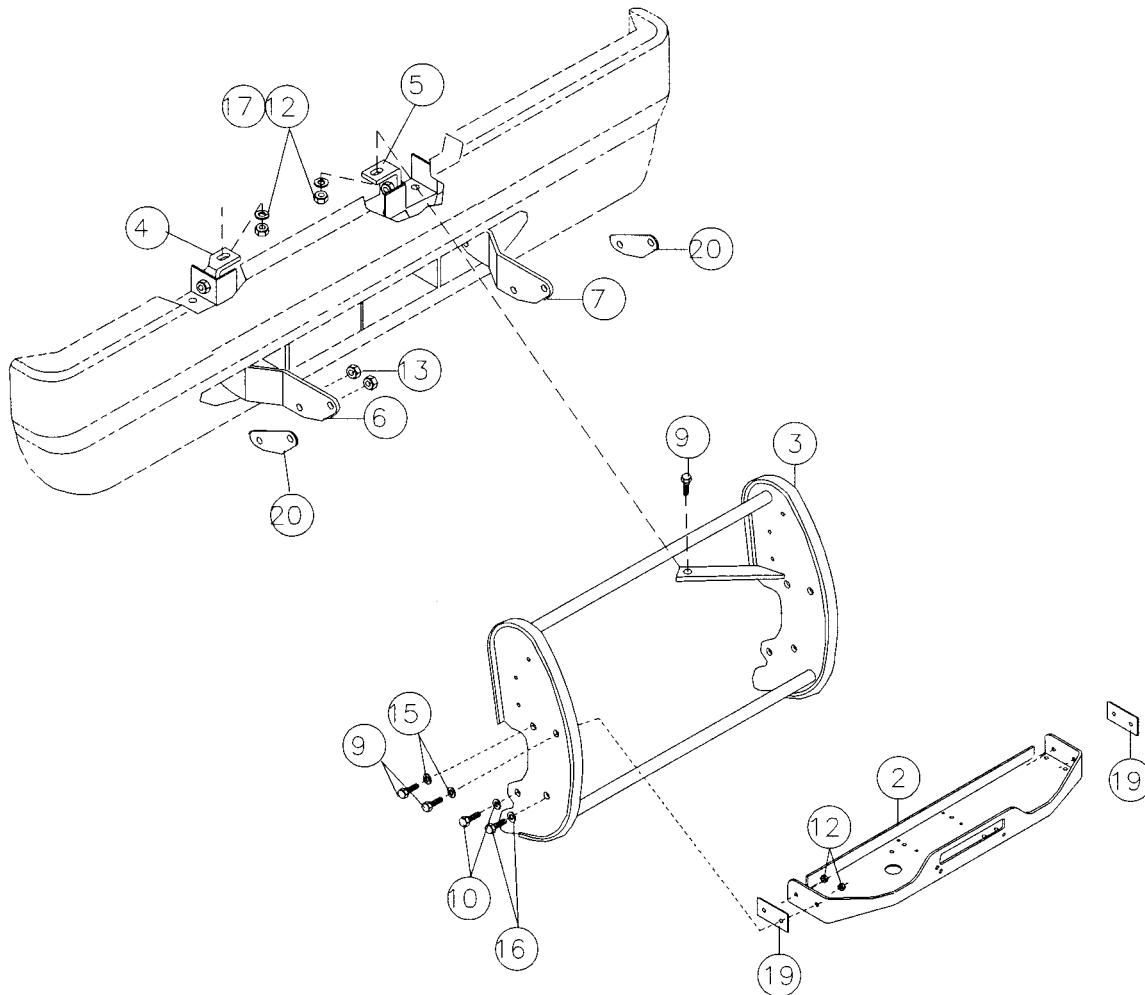
STEP 2

Set channel (item #2) between side plate of side plate assembly (item #3). Attach R.H. end of channel, with shim (item #19) to side plate (item #3) using (2) 3/8-16NC x 1-1/4 lg.hx.hd. capscrews with washers and nuts, as shown below. Attach L.H. end of channel, with shim (item #19), to side plate (item #3). Use (2) 3/8-16NC x 1-1/4 lg. hx.hd. capscrews with washers and nuts to secure channel to side plate assembly.

Secure lower end of side plate assembly (item #3) to outside of lower R.H. & L.H. bracket assembly (item #6 & #7) with shims (item #20). Use (2) 1/2-13NC x 1-1/4 lg. Hx.Hd. capscrews with washers and nuts (each side).

Attach strap on side plate assembly to upper bracket assemblies (item #4 & #5). Use (1) 3/8-16NC x 1-1/4" lg. capscrew (item #9) with washer (item #17) and nut (item #12), each side.

TIGHTEN ALL HARDWARE TO PROPER TORQUE VALUE (See Torque Value Chart, page 4).



STEP 3

FOR REP SERIES, PRO-6000, and PRO-PLUS SERIES WINCHES: Refer to INSTALLATION and ELECTRICAL CONNECTIONS section of winch owner's manual for installation of fairlead and electrical hookup. If vehicle tag is required on front of vehicle, attach license mtg. bracket (item #1) to bottom of channel (item #2) using (2) 1/4-20NC x 3/4 lg. hx.hd. capscrews and nuts. Attach tag to license mtg. bracket. Use (2) 1/4-20NC x 1/2 lg. hx.hd. capscrews (furnished with winch) through tag, 1/4" washer (item #14) and into nutsert in license mtg. bracket.

WHEN MOUNTING THE EARLIER MODEL "REP-6000" WINCH WITH SOLENOID ASSEMBLY UNDER THE MOTOR, SEE LAST PAGE.

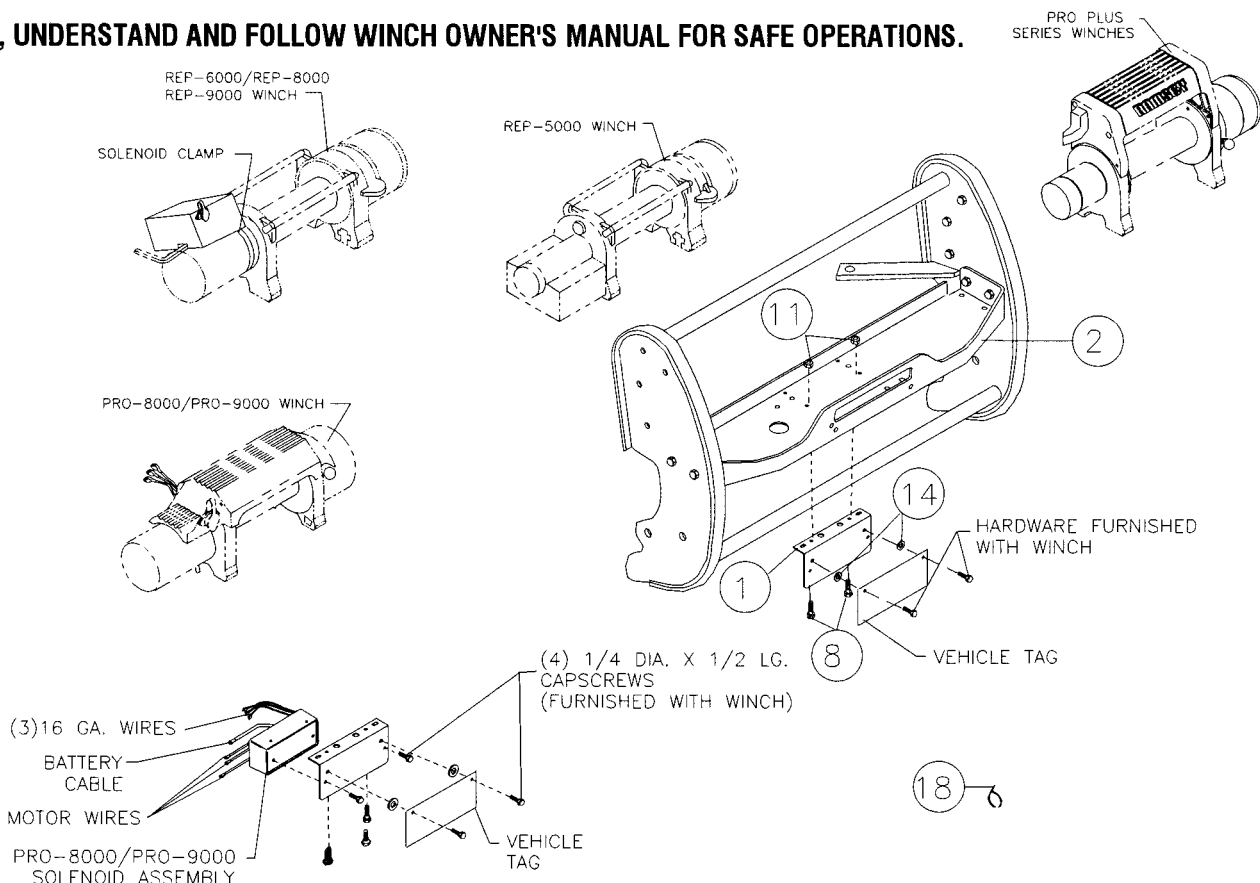
FOR PRO-8000/PRO-9000 SERIES WINCHES ONLY:

Attach solenoid bracket assembly (item #1) to bottom of channel (item #2) using (2) 1/4-20NC x 3/4 lg. hx.hd. capscrews with nuts. Mount solenoid assembly to solenoid bracket (item #1). Use (2) 1/4-20NC x 1/2 lg. hx.hd. capscrews (furnished with winch) through bracket and into nutserts in bottom of solenoid assembly, as shown below. If vehicle tag is required on front of vehicle, attach tag to license mtg. bracket. Use (2) 1/4-20NC x 1/2 lg. hx.hd. capscrews (furnished with winch) through tag, 1/4" washer (item #14) and into nutsert in license mtg. bracket. Place ends of motor wire through large hole in bottom of channel (item #2). Place winch in channel assembly (item #2). Lift motor end of winch up enough to allow attachment of motor wires to motor terminals. Securely attach "F-1", "F-2" and "A" wire from solenoid assembly to appropriate "F-1", "F-2" and "A" terminals of motor assembly. Place boots on wires over motor terminals. Refer to INSTALLATION and ELECTRICAL CONNECTIONS section of winch owner's manual for installation of fairlead and remaining electrical hookup.

Attach winch to channel using (4) 3/8-16NC x 1-1/4 lg. capscrews with lockwashers with flatwashers and nuts placed in pockets of winch feet (hardware furnished with winch).

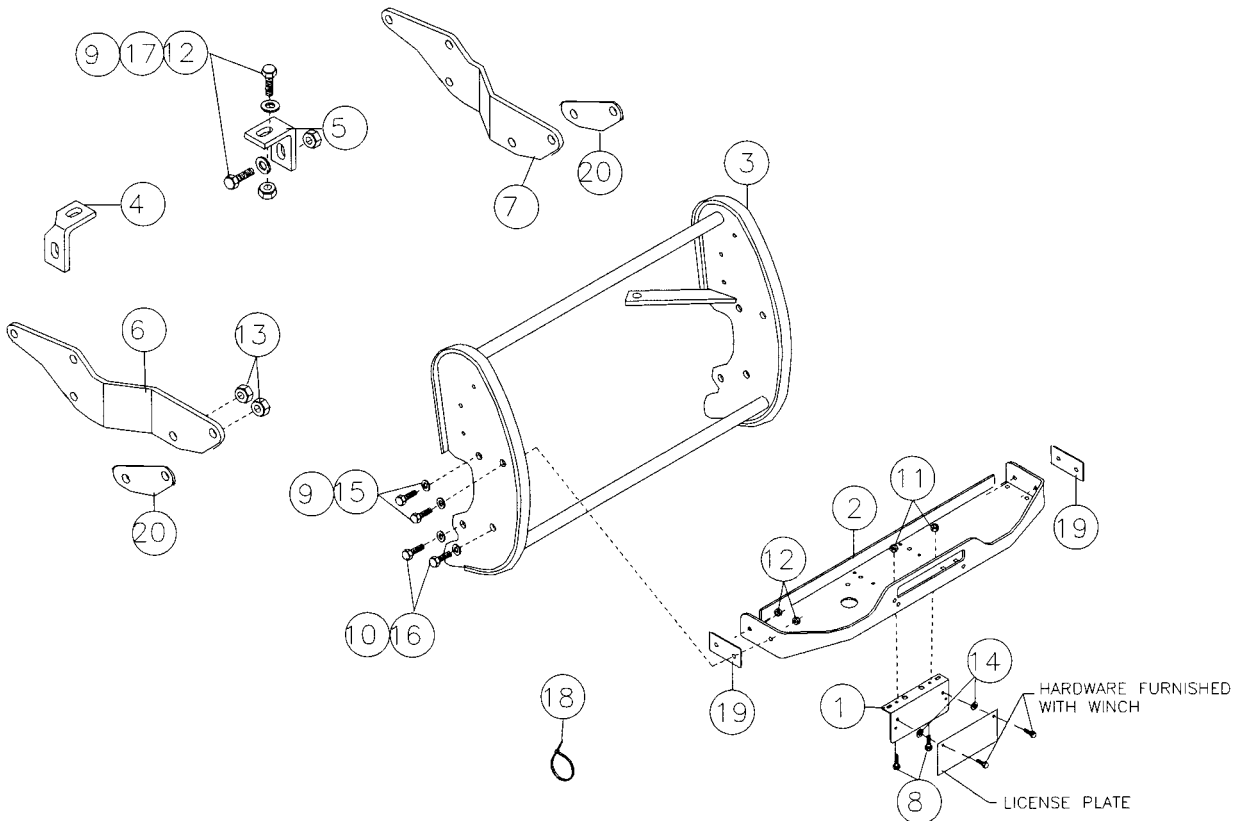
TIGHTEN ALL HARDWARE TO PROPER TORQUE VALUE (See Torque Value Chart, page 4).

READ, UNDERSTAND AND FOLLOW WINCH OWNER'S MANUAL FOR SAFE OPERATIONS.

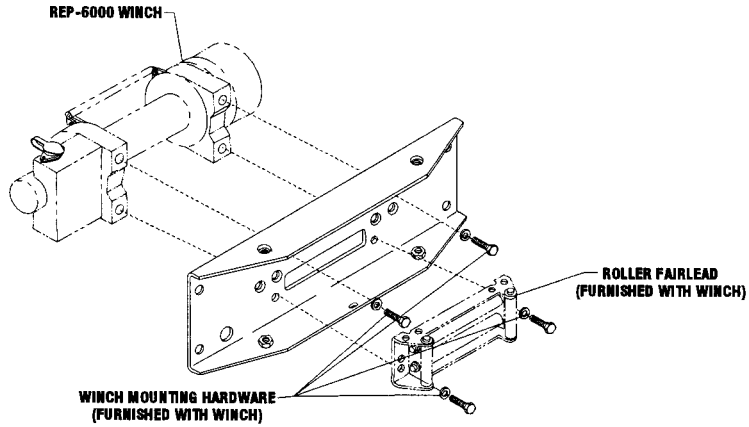


**PARTS LIST FOR DODGE DAKOTA/DURANGO
SIERRA GRILLE GUARD KIT #295914**

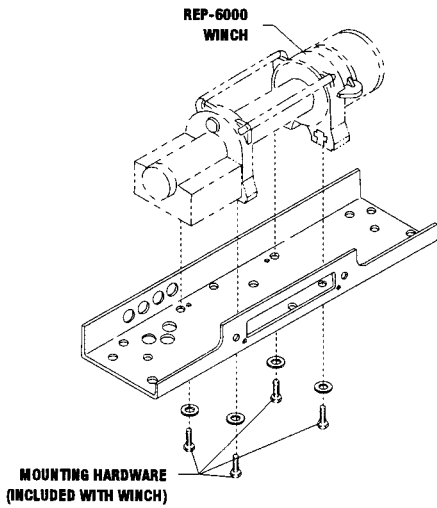
<u>ITEM #</u>	<u>QTY.</u>	<u>PART #</u>	<u>DESCRIPTION</u>
1	1	100001	BRACKET-LICENSE MTG.
2	1	100002	CHANNEL ASSEMBLY-WINCH MTG.
3	1	12306	SIDE PLATE ASSEMBLY
4	1	1031	BRACKET ASSEMBLY-UPPER R.H.
5	1	1032	BRACKET ASSEMBLY-UPPER L.H.
6	1	100413	BRACKET ASSEMBLY-LOWER R.H.
7	1	100414	BRACKET ASSEMBLY-LOWER L.H.
8	2	100037	CAPSCREW 1/4-20NC X 3/4 LG. GR.8 HX.HD. BLACK
9	8	100010	CAPSCREW 3/8-16NC X 1-1/4 LG. HX.HD. GR.5 BLACK
10	4	100011	CAPSCREW 1/2-13NC X 1-1/4 LG. HX.HD. GR.5 BLACK
11	2	100012	NUT 1/4-20NC HX.ELASTIC STOP, BLACK
12	8	100013	NUT 3/8-16NC HX.ELASTIC STOP, BLACK
13	4	100014	NUT 1/2-13NC HX. ELASTIC STOP, BLACK
14	2	100015	FLAT WASHER 1/4 PLASTIC
15	4	100089	FLAT WASHER 3/8 PLASTIC
16	4	100172	FLAT WASHER 1/2 PLASTIC
17	4	100316	WASHER SAE 3/8 FLAT
18	4	100016	CABLE TIES
19	2	100077	SHIM-CHANNEL END
20	2	100098	SHIM-LOWER BRACKET



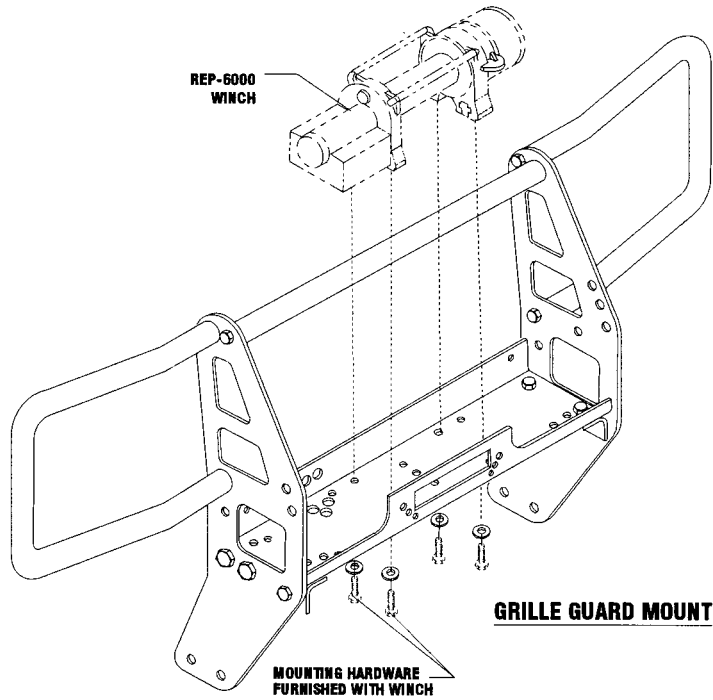
INSTRUCTIONS FOR MOUNTING AN EARLIER MODEL REP 6000 WINCH (SOLENOID ASSEMBLY UNDER THE MOTOR) TO A RAMSEY BUMPER, GRILLE GUARD, OR HIDDEN / ORIGINAL KIT.



BUMPER MOUNT



HIDDEN/ORIGINAL MOUNT



GRILLE GUARD MOUNT