



HYDRAULIC PALLET TRUCK OWNER'S MANUAL



WARNING:
Read carefully and understand all **ASSEMBLY AND OPERATION INSTRUCTIONS** before operating. Failure to follow the safety rules and other basic safety precautions may result in serious personal injury.

Item# 14316

HYDRAULIC PALLET TRUCK OWNER'S MANUAL

Thank you very much for choosing a NORTHERN TOOL + EQUIPMENT CO., INC. Product! For future reference, please complete the owner's record below:

Model: _____ Purchase Date: _____

Save the receipt, warranty and these instructions. It is important that you read the entire manual to become familiar with this product before you begin using it.

This machine is designed for certain applications only. Northern Tool + Equipment cannot be responsible for issues arising from modification. We strongly recommend this machine is not modified and/or used for any application other than that for which it was designed. If you have any questions relative to a particular application, DO NOT use the machine until you have first contacted Northern Tool + Equipment to determine if it can or should be performed on the product.

For technical questions please call 1-800-222-5381.

WARNING

1. Do not operate a Hand Pallet Truck unless you are familiar with it and have been trained and authorized to do so. Read all warnings and instructions here and on the truck.
2. Do not operate a Hand Pallet Truck until you have checked its condition. Give special attention to the wheels, handle, forks, raising and lowering control, and brakes (if so equipped). Do not operate a damaged or faulty truck. Do not attempt repairs unless you are trained and authorized to do so.
3. Operate Hand Pallet Truck only from the designated operating position. Never place any part of your body in the lifting mechanism or under the forks or load. Do not carry passengers.
4. Do not handle unstable or loosely stacked loads. Use special care when handling long, high or wide loads to avoid losing the load, striking bystanders, or tipping the truck.
5. Do not overload the truck. Check capacity plate for load capacity information. Overloading may cause truck to perform incorrectly and unsafely.
6. The capacity of tile truck assumes an evenly distributed load, with the center of the load being the halfway point of the tile fork length.
7. Make sure that length of tile forks match the length of the pallet. Using a pallet truck where the forks are longer than the pallet will damage the truck if the pallet truck is pushed through the pallet and the forks are under a second pallet behind the one being lifted. When lowering the load, make sure the area where the pallet is to be placed is clear.
8. Observe traffic regulations. Yield right of way to pedestrians. Stop at cross aisles.
9. Hand Pallet Trucks are for general operation on level, flat hard surfaces. If ramps are encountered, the hand brake can be employed, or the truck may be stopped in emergencies by operating the lowering control, which will lower load to the ground, stopping the truck. If the truck has to be stopped in this manner, care should be taken so that no part of your body is near or under the load. It is important not to operate a Hand Pallet Truck on a grade with loads that are too heavy to be easily handled by the operator since they are manually operated trucks. They are not to be used by operators that are not physically capable of safely handling a truck with a load.

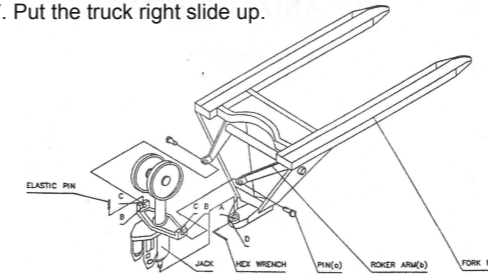
FAILURE TO FOLLOW THESE INSTRUCTIONS MAY CAUSE SERIOUS INJURY TO THE OPERATOR OR OTHERS.

Jack and Fork Frame Assembly

1. Refer to illustration(1) According the sequence as follows:
2. Turn fork frame over.

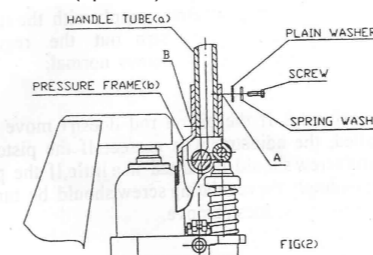
HYDRAULIC PALLET TRUCK OWNER'S MANUAL

3. Hold up the jack and slide the piston rod into hole A, making sure that the 3/4in. dim. Steel ball in front of piston rod doesn't fall off, or at the first put the steel ball into hole A.
4. Slide the two pins(a) through the holes in the rocker arms(b)and into hole B.
5. Align hole in the pin and tap the elastic pin into hole C.
6. Slide the hex wrench into hole D and tighten up the screw. If the jack can't be turned around, the screw should be loosened, and adjust the picton rod end, then tighten up the screw.
7. Put the truck right slide up.



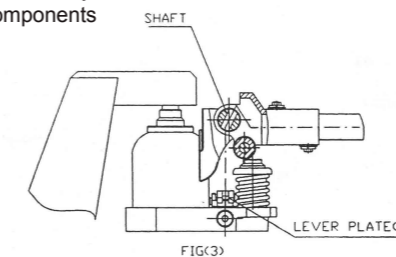
Handle and Jack Assembly

1. Please assemble is as follows;
2. Insert the handle tube(a) into the pressure frame(b). The chain should drop through the shaft. Refer to illustration(2).
3. Put the plain washer and spring washer round the screw. Twist the screw into hole A and B and tighten them(4places).



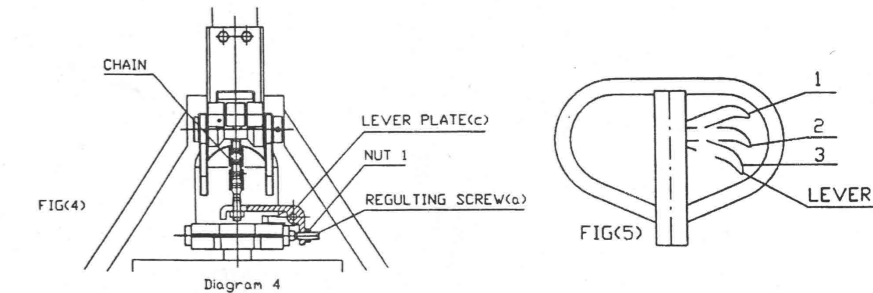
4. Then press down the handle to a horizontal position.
5. Slide the chain through the shaft hose(remark: the shaft hole's direction should be right as illustration). Refer to illustration(3)
6. Lift the handle to a vertical position.
7. Use a steel bar to lift the lever plate©. Put the screw at the end of the chain into the groove of the lever plate.

Notice: During the course of assembly, the nut at the end of the chain should not be moved. Adjustment for lever Plate Components

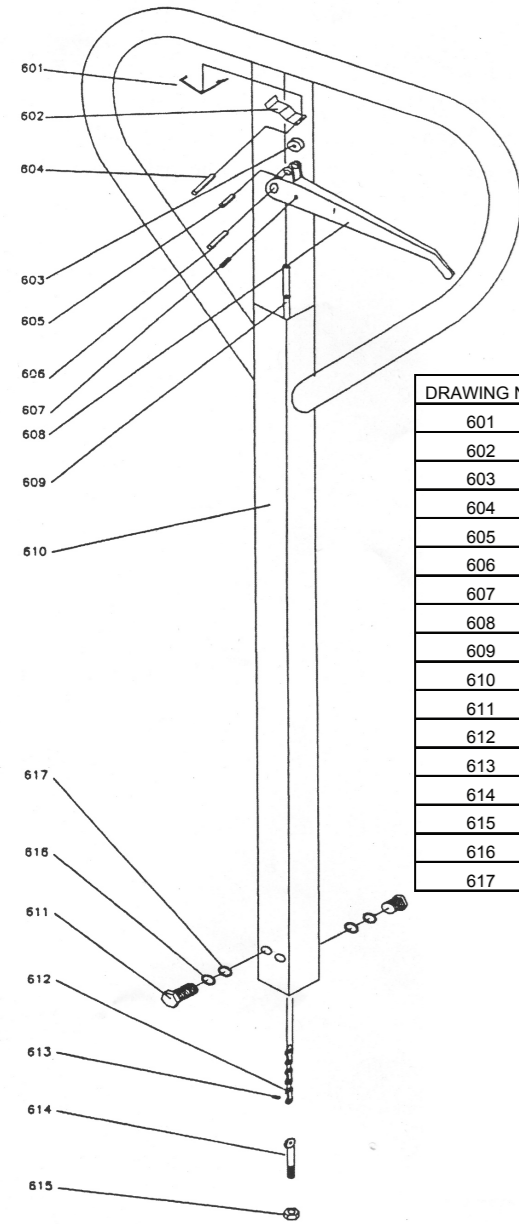


HYDRAULIC PALLET TRUCK OWNER'S MANUAL

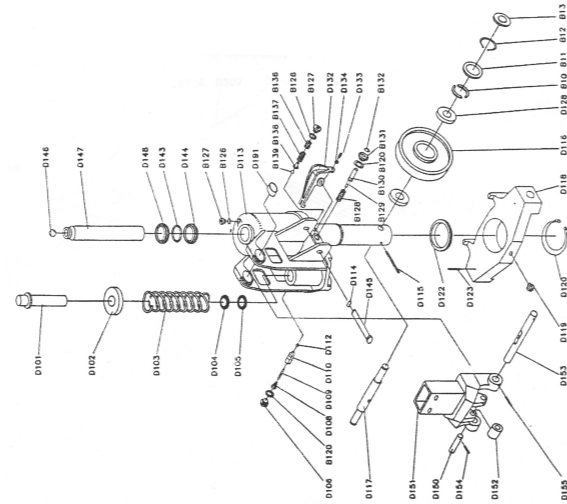
1. Adjust it as follows steps:
2. Refer to illustration (5). When the lever is in position 3, push the handle down and up to lift the piston rod. If the lifting range is normal (remark: at the range of pushing the handle every time the piston rod should be lifting at all times.) The position of the regulating screw (a) in illustration (4) is correct. If the piston rod doesn't move of the lifting range doesn't comply with the standard nut I should be loosened first, the turn out the regulating screw a little until the lifting range becomes normal.
3. Put the lever in position 2 If the piston rod doesn't move as the handle tube is pulled, the adjustment is correct. If the piston rod rises the regulating screw should be turned in a little, If the piston rod lowers, correspondingly the regulating screw should be turned out a little until the piston rod doesn't move.
4. Lift the piston rod to the highest pull the lever in position 1. If the fork lowering speed is normal, the adjustment is correct. If the piston rod doesn't lower or the speed is too slow, the regulating screw should be turned in a little until normal.
5. Repeat steps 1-3 until all movements are normal. The all lifting height of piston rod should be about 110cm and the times of operating handle should be about 13 times.



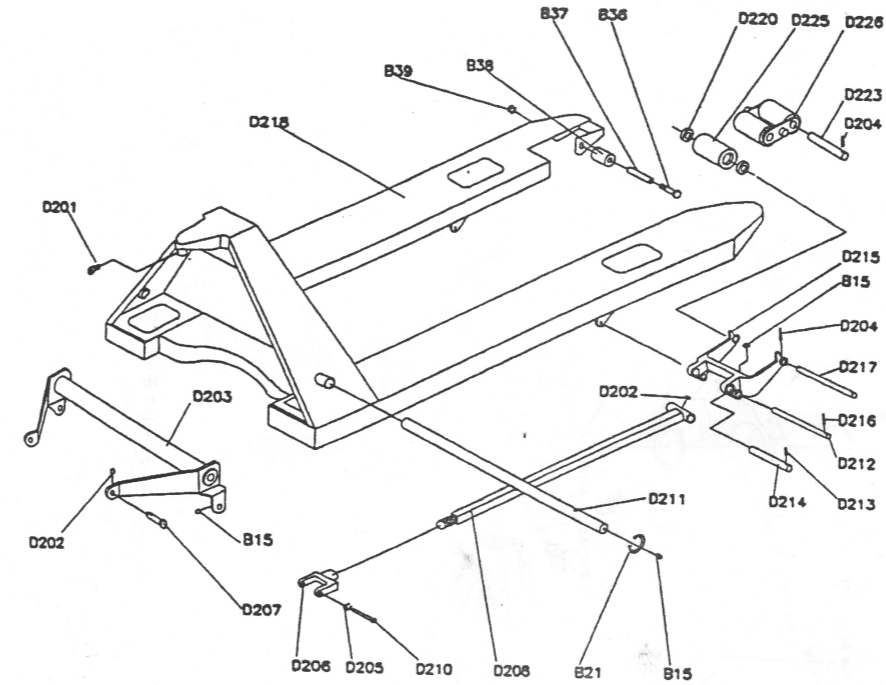
WARNING: When inserting the connecting chain into the lower release lever (lever plate (c)), use the proper tools to guide the end into the forked area. Keep all loose clothing, fingers and body extremities from this area and out from under the paller jack at all times.



DRAWING NO	DESCRIPTION	QUANTITY
601	SPRING	1
602	BLADE SPRING	1
603	ROLLER	1
604	ELASTIC PIN	1
605	ELASTIC PIN	1
606	ELASTIC PIN	1
607	ELASTIC PIN	1
608	HANDLE	1
609	PULL ROD	1
610	HANDLE TUBE	1
611	SCREW	4
612	CHAIN	1
613	PIN	1
614	ADJUSTING SCREW	1
615	NUT	1
616	LOCK WASHER	4
617	PLAIN WASHER	4



NO.	DESCRIPTION	QUANTITY	NO.	DESCRIPTION	QUANTITY
D101	PUMP PLUNCER	1	D146	STEEL BALL	1
D102	WASHER	1	D147	PISTON ROD	1
D103	SPRING	1	D148	DUST RING	1
D104	DUSTRING	1	D150	SHAFT	1
D105	Y-RING	1	D151	PRESSURE FRAME	1
D106	SCREW	1	D152	PRESSURE ROLLER	1
D108	SPRING	1	D153	SHAFT	1
D109	SPINDLE OF DEMPING VALVE	1	D154	ELASTIC PIN	1
D110	SEAT OF DAMPING VALVE	1	D155	ELASTIC PIN	1
D112	STEEL BALL	1	D191	BUSH	2
D113	BASE	1	B10	HALF CIRQUE	2
D114	RETANING RING FOR AXLE	1	B11	BOWL WASHER	2
D115	ELASTIC PIN	1	B12	RETANING RING FOR AXLE	2
D116	LOAD WHEEL	2	B13	DUST COVER	2
D117	LOAD WHEEL SHAFT	1	B120	COPPER WASHER	2
D118	SUPPORTING BASE	1	B126	COPPER WASHER	2
D119	OILER	1	B127	BOLT	2
D120	RETANING RING FOR AXLE	1	B128	SPRING	1
D122	BEARING	1	B129	STRIKE PIN	1
D123	ELASTIC PIN	2	B130	O-RING	1
D128	BEARING	4	B131	AXLE SLEEVE	1
D132	LEVER PLATE	1	B132	O-RING	1
D133	REGULATE SCREW	1	B136	BOLT	1
D134	NUT	1	B137	SPRING	1
D143	O-RING	1	B138	BALL BASE	1
D144	Y-RING	1	B139	STEEL BALL	1
D145	SHAFT	1			



NO.	DESCRIPTION	QUANTITY	NO.	DESCRIPTION	QUANTITY
D210	SCREW	1	D216	ELASTIC PIN	2
D202	OILER	4	D217	SHAFT FOR FORK WHEL	2
D203	ROCK-ARM	1	D218	FORK FRAME	1
D204	ELASTIC PIN	2	D220	BEARING	4
D205	RETAINING RING FOR AXLE	2	D223	SHAFT FOR DOUBLE WHEEL	0
D206	JOINT	2	D225	FORK WHEEL	2
D207	PIN	2	D226	NOG OF FORK WHEEL	0
D208	STRAIGHT TAPPET	2	B15	OILER	8
D210	PIN	2	B21	RETAINING RING FOR HOLE	2
D211	LONG SHAFT	1	B36	BOLT	2
D212	SHAFT	2	B37	SHEATH	2
D213	ELASTIC PIN	2	B38	WHEEL	2
D214	SHORT SHAFT	2	B39	NUT	2
D215	FRAME OF FORK WHEEL	2			



Distributed by
Northern Tool & Equipment Co., Inc.
Burnsville, MN 55306-6936
NorthernTool.com
Made in China.