



6000-LB. HYDRAULIC JACK OWNER'S MANUAL



 **WARNING**

Read carefully and understand all **INSTRUCTIONS** before operating.
Failure to follow the safety rules and other basic safety precautions
may result in serious personal injury.

ITEM#128390

Thank you very much for choosing a NORTHERN TOOL + EQUIPMENT CO., INC. Product!
For future reference, please complete the owner's record below:

Model: _____ Purchase Date: _____

Save the receipt, warranty and these instructions. It is important that you read the entire manual to become familiar with this product before you begin using it.

This machine is designed for certain applications only. Northern Tool + Equipment cannot be responsible for issues arising from modification. We strongly recommend this machine is not modified and/or used for any application other than that for which it was designed. If you have any questions relative to a particular application, DONOT use the machine until you have first contacted Northern Tool + Equipment to determine if it can or should be performed on the product.

For technical questions please call **1-800-222-5381**.

GENERAL SAFETY RULES



WARNING: Read and understand all instructions. Failure to follow all instructions listed below may result in electric shock, fire and/or serious injury.



WARNING: The warnings, cautions, and instructions discussed in this instruction manual cannot cover all possible conditions or situations that could occur. It must be understood by the operator that common sense and caution are factors which cannot be built into this product, but must be supplied by the operator.

SAVE THESE INSTRUCTIONS

WORK AREA

- **Keep work area clean**, free of clutter and well lit. Cluttered and dark work areas can cause accidents.
- **Do not use your jack where there is a risk of causing a fire or an explosion;** e.g. in the presence of flammable liquids, gasses, or dust. Do not expose to rain or wet conditions.
- **Keep children and bystanders** away while operating the hydraulic jack. Distractions can cause you to lose control, so visitors should remain at a safe distance from the work area.
- **Be aware of all power lines, electrical circuits,** water pipes and other mechanical hazards in your work area.
- **Be alert of your surroundings.** Using jacks in confined work areas may put you in dangerous situations.

PERSONAL SAFETY

- **Stay alert**, watch what you are doing and use common sense when operating a jack. Do not use a jack while you are tired or under the influence of drugs, alcohol or medication. A moment of inattention while operating jacks may result in serious personal injury.
- **Dress properly.** Do not wear loose clothing, dangling objects, or jewelry. Keep your hair, clothing and gloves away from moving parts. Loose clothes, jewelry or long hair can be caught in moving parts.
- **Use safety apparel and equipment.** Use safety goggles or safety glasses with side shields which comply with current national standards, or when needed, a face shield. Use as dust mask in dusty work conditions. This applies to all persons in the work area. Also use non-skid safety shoes, hardhat, gloves, dust collection systems, and hearing protection when appropriate.
- **Do not overreach.** Keep proper footing and balance at all times while using a jack.

HYDRAULIC JACK USE

- **Always make certain the jack and item it is supporting** are set on a flat, level, and secure surface that is capable of supporting the combined weight of the entire unit. The load must be centered on the jack to ensure stability.
- **The jack is designed for lifting only.** Always use adequately rated stationary supports immediately after the object is lifted.
- **Never put any part of your body** under any object supported by the jack at anytime.
- **Never leave the jack unattended** while supporting an object.
- **Do not force the jack. Do not use inappropriate attachments in an attempt to exceed the jack's stated lifting capacity. Do not attempt to force the jack to do the work of a larger industrial jack.**
- **Do not exceed** the rated load capacity.
- **Check for misalignment** or binding of moving parts, breakages of parts, and any other condition that may affect the jack's operation. If damaged, have the jack serviced before using.
- **Store idle jacks. When jacks are not in use, store them in a dry, secure place out of the reach of children. Inspect jacks for good working condition prior to storage and before re-use.**
- **Use only accessories that are recommended by the manufacturer for your model.** Accessories that may be suitable for one jack may create a risk of injury when used on another jack.
- **Always use the safety cradle** or proper cushion when lifting the load.
- **Do not lift people with the hydraulic jack.**

OPERATION

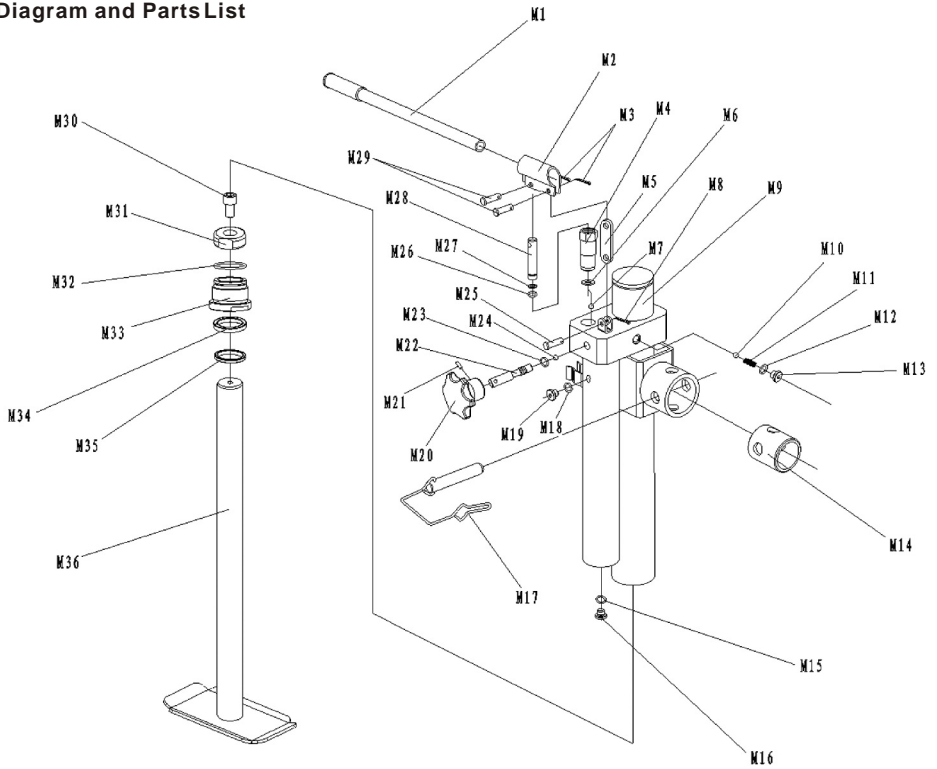
1. Before using, please inspect each function operates properly.
2. To lift up the jack, swivel the knob (M20) clockwise until it is tightened.
3. Insert the press handle (M1) into the handle base (M2), moving up and down to lift.
4. To drop the jack, slowly swivel the knob (M20) counterclockwise.

WARNING: Do not overload the jack's rated capacity of 6000 lbs.

MAINTENANCE

1. **If the pole plug (M28) won't operate smoothly, add a small amount of lubricating grease.**
2. **To avoid danger, it is not recommended for the customer to change the hydraulic fluid.**
3. **Always release the cylinder to the bottom at the end of operation.**

Diagram and Parts List



Part No.	Description	Qty.
M1	Press handle	1
M2	Handle base	1
M3	2.5 cotter pin	2
M4	Small cylinder	1
M5	Pull shank	1
M6	Copper washer	1
M7	7 steel ball	1
M8	2.5 cotter pin	1
M9	Cylinder	1
M10	7 steel ball	1
M11	Spring	1
M12	O-Ring 14 × 1.9	1
M13	M10 × 1.0 tube connector	1
M14	Button sheath	1
M15	O-Ring 14 × 1.9	1
M16	M10 × 1.0 tube connector	1
M17	Pin	1
M18	O-Ring 14 × 1.9	1

Part No.	Description	Qty.
M19	M10 × 1.0 tube connector	1
M20	Knob	1
M21	M5 × 16 bolt	1
M22	Piston	1
M23	O-Ring 8 × 1.9	1
M24	7 steel ball	1
M25	Pole pin	1
M26	O-Ring 13 × 3	1
M27	12 sealer	1
M28	Pole plug	1
M29	Pole pin	1
M30	M12 × 25 hex bolt	1
M31	Lock place piece	1
M32	O-Ring 45 × 3.1	1
M33	Cylinder cover	1
M34	UH35 sealer	1
M35	DHS35 sealer	1
M36	Pole plug shank	1

MANUFACTURER'S LIMITED WARRANTY

The limited warranty set forth below is given by Northern Tool + Equipment Company Inc., (NTE) with respect to new merchandise purchased and used in the United States, its possessions and territories.

NTE warrants this product against defects in material and workmanship for a period of one (1) year commencing on the date of original purchase and will, at its option, repair or replace, free of charge, any part found to be defective in material or workmanship. This limited warranty shall only apply if this product has been operated and maintained in accordance with the Owner's Manual furnished with the product, and has not been subject to misuse, abuse, commercial use, neglect, accident, improper maintenance, alteration, vandalism, theft, fire, water or damage because of other peril or natural disaster. Damage resulting from the installation or use of any accessory or attachment not approved by NTE for use with the product(s) covered by this manual will void your warranty as to any resulting damage. This warranty is limited to ninety (90) days from the date of original retail purchase for any NTE product that is used for rental or commercial purposes, or any other income-producing purposes.

This limited warranty does not provide coverage in the following cases:

1. Overload the claimed capacity

NTE reserves the right to change or improve the design of any NTE product without assuming any obligation to modify any product previously manufactured.

No implied warranty, including any implied warranty of merchantability or fitness for a particular purpose, applies after the applicable period of express written warranty above as to the parts as identified. No other express warranty or guaranty, whether written or oral, except as mentioned above, given by any person or entity, including a dealer or retailer, with respect to any product shall bind NTE during the period of the Warranty, the exclusive remedy is repair or replacement of the product as set forth above. (Some states do not allow limitations on how long an implied warranty lasts, so the above limitation may not apply to you.)

The provisions as set forth in this warranty provide the sole and exclusive remedy arising from the sales. NTE shall not be liable for incidental or consequential loss or damages including, without limitation, expenses incurred for substitute or related expenses, or for rental expenses to temporarily replace a warranted product. (Some states do not allow limitations on how long an implied warranty lasts, so the above limitation may not apply to you.)

In no event shall recovery of any kind be greater than the amount of the purchase price of the product sold. Alteration of the safety features of the product shall void this warranty. You assume the risk and liability for loss, damage, or injury to you and your property and/or to others and their property arising out of the use or misuse or inability to use the product.

This limited warranty shall not extend to anyone other than the original purchaser, original lessee or the person for whom it was purchased as a gift.

How State Law Relates to this Warranty: This warranty gives you specific legal rights, and you may also have other rights which vary from state to state.

For questions about your warranty, please call 1-800-222-538



Northern Tool + Equipment Co.,
2800 Southcross Drive West
P.O. Box 1499 Burnsville, MN 55337-0499
Made in China