



MINI AIR COMPRESSOR KIT OWNER'S MANUAL



⚠ WARNING

Read carefully and understand **RULES FOR SAFE OPERATION** and instructions before operating. Failure to follow the safety rules and other basic safety precautions may result in serious personal injury.

Thank you very much for choosing a NORTHERN TOOL + EQUIPMENT CO., INC., Product! For future reference, please complete the owner's record below:

Model: _____ Purchase Date: _____

Save the receipt, warranty and these instructions. It is important that you read the entire manual to become familiar with this product before you begin using it.

This machine is designed for certain applications only. Northern Tool + Equipment strongly recommends this machine is not modified and/or used for any application other than that for which it was designed. If you have any questions relative to a particular application, DO NOT use the machine until you have first contacted Northern Tool + Equipment to determine if it can or should be performed on the product.


For technical questions and replacement parts, please call 1-800-222-5381.


TECHNICAL SPECIFICATIONS


ITEM	DESCRIPTION
Power:	1/8 HP
Voltage	120V/60HZ
Maximum pressure:	40 PSI
Air output:	.46 CFM
Free Speed	3400 RPM
Includes:	Manometer; pressure regulator; air filter
Connection:	1/8" NPT
Airbrush Kit:	1 pc. fine head airbrush, 1 pc. hose, 2 pcs. 2-oz. jar with cover 1 pc. attached 3/4 oz. jar 1 pc. propel regulator and adaptor


GENERAL SAFETY RULES

 **WARNING: Read and understand all instructions.** Failure to follow all instructions listed below may result in electric shock, fire and/or serious injury.

 **WARNING: The warnings, cautions, and instructions discussed in this instruction manual cannot cover all possible conditions or situations that could occur. It must be understood by the operator that common sense and caution are factors which cannot be built into this product, but must be supplied by the operator.**

 **WARNING: HIGH PRESSURE AIR.** Bypassing, modifying or removing safety/relief valves can cause serious injury or death. Do not bypass, modify or remove safety/relief valves. Do not direct air stream at body. Rusted tanks can cause explosion and severe injury or death. Drain tank daily or after each use. Drain valve located at bottom of tank.

 **CAUTION: RISK OF BURSTING.** Use only suitable air handling parts acceptable for pressure of not less than the maximum allowable working pressure of the machine.

 **DANGER: RISK TO BREATHING.** The compressed air from your compressor is not safe for breathing. The air stream may contain carbon monoxide, toxic vapors or other contaminants. Never inhale air from the compressor either directly or from a breathing device connected to the compressor.

SAVE THESE INSTRUCTIONS

WORK AREA

- **Keep work area clean**, free of clutter and well lit. Cluttered and dark work areas can cause accidents.
- **Do not use your compressor where there is a risk of causing a fire or an explosion**; e.g. in the presence of flammable liquids, gasses, or dust.
- **Keep children and bystanders away** while operating a compressor. Distractions can cause you to lose control, so visitors should remain at a safe distance from the work area.
- **Be aware of all power lines, electrical circuits**, water pipes and other mechanical hazards in your work area, particularly those hazards below the work surface hidden from the operator's view that may be unintentionally contacted and may cause personal harm or property damage.
- **Be alert of your surroundings**. Using compressors in confined work areas may put you dangerously close to cutting tools and rotating parts.

ELECTRICAL SAFETY

⚠ WARNING: Unqualified use and improper maintenance of this air compressor could result in serious personal injury. The following safety instructions should be operated to avoid any risk! Please read all of these instructions carefully and follow them.

⚠ WARNING! Always check to ensure the power supply corresponds to the voltage on the rating plate.

- **Do not abuse the cord.** Never carry a compressor by its power cord, or yank cord or extension cord from the receptacle. Keep power and extension cords away from heat, oil, sharp edges or moving parts. Replace damaged cords immediately. Damaged cords may cause a fire and increase the risk of electric shock.
 - **Grounded tools** must be plugged into an outlet properly installed and grounded in accordance with all codes and ordinances. Never remove the grounding prong or modify the plug in any way. Do not use any adapter plugs. Check with a qualified electrician if you are in doubt as to whether the outlet is properly grounded.
 - **Double insulated tools** are equipped with a polarized plug (one blade is wider than the other). This plug will fit in a polarized outlet only one way. If the plug does not fit fully in the outlet, reverse the plug. If it still doesn't fit, contact a qualified electrician to install a polarized outlet. Do not change the plug in any way.
 - **Avoid body contact** with grounded surfaces such as pipes, radiators, ranges, and refrigerators. There is an increase risk of electric shock if your body is grounded.
 - **When operating a power tool outside**, use an outdoor extension cord marked "W-A" or "W." These cords are rated for outdoor use and reduce the risk of electric shock.
- Extension Cord Use.
- A. Use only 'Listed' extension cords. If used outdoors, they must be marked "For Outdoor Use." Those cords having 3-prong grounding type plugs and mating receptacles are to be used with grounded tools.
- B. Replace damaged or worn cords immediately.
- C. Check the name plate rating of your tool. Use of improper size or gauge of extension cord may cause unsafe or inefficient operation of your tool. Be sure your extension cord is rated to allow sufficient current flow to the motor. For the proper wire gauge for your tool, see chart.

CHART FOR MINIMUM WIRE SIZE OF EXTENSION CORD:

Nameplate AMPS	CORD LENGTH			
	25'	50'	100'	150'
0-6	18 AWG	16 AWG	16 AWG	14 AWG
6-10	18 AWG	16 AWG	14 AWG	12 AWG
10-12	16 AWG	16 AWG	14 AWG	12 AWG
12-16	14 AWG	12 AWG	(NOT RECOMMENDED)	

If in doubt, use larger cord.

Be sure to check voltage requirements of the tool to your incoming power source.

- **Do not expose** compressor to rain or wet conditions. Water entering a motor will increase the risk of electric shock.
- **Do not let your fingers** touch the terminals of plug when installing to or removing from the outlet.
- **Ground fault circuit interrupters.** If work area is not equipped with a permanently installed Ground Fault Circuit Interrupter outlet (GFCI), use a plug-in GFCI between compressor or extension cord and power receptacle.

PERSONAL SAFETY

- **Stay alert,** watch what you are doing and use common sense when operating a compressor. Do not use a compressor while you are tired or under the influence of drugs, alcohol or medication. A moment of inattention while operating a compressor may result in serious personal injury.
- **Dress properly.** Do not wear loose clothing, dangling objects, or jewelry. Keep your hair, clothing and gloves away from moving parts. Loose clothes, jewelry or long hair can be caught in moving parts. Air vents often cover moving parts and should be avoided.
- **Use safety apparel and equipment.** Use ANSI-approved safety goggles or safety glasses with side shields which comply with current national standards, or when needed, a face shield. Use a dust mask in dusty work conditions. This applies to all persons in the work area. Also use non-skid safety shoes, hard hat, gloves, dust collection systems, and hearing protection when appropriate.
- **Avoid accidental starting.** Ensure the switch is in the off position before plugging tool into power outlet. In the event of a power failure, while a compressor is being used, turn the switch off to prevent surprise starting when power is restored.
- **Do not overreach.** Keep proper footing and balance at all times.
- **Remove adjusting keys or wrenches** before connecting to the power supply or turning on the tool. A wrench or key that is left attached to a rotating part of the tool may result in personal injury.

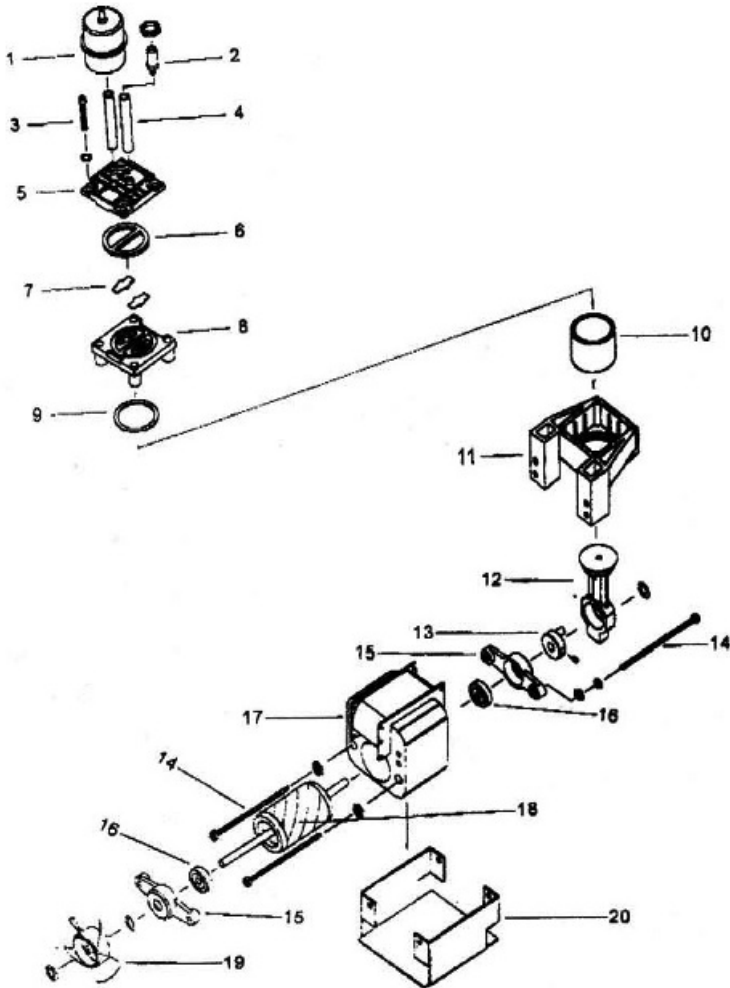
TOOL USE AND CARE

- **Never use a compressor** with a malfunctioning switch. Any compressor that cannot be controlled with the switch is dangerous and must be repaired by an authorized service representative before using.
- **Disconnect power** from compressor and place the switch in the locked or off position before servicing, adjusting, installing accessories or attachments, or storing. Such preventive safety measures reduce the risk of starting the compressor accidentally.
- **Secure work** with clamps or a vise instead of your hand to hold work when practical. This safety precaution allows for proper tool operation using both hands.
- **Store idle compressor.** When a compressor is not in use, store them in a dry, secure place out of the reach of children. Inspect the compressor for good working condition prior to storage and before re-use.
- **Use only accessories that are recommended** by the manufacturer for your model. Accessories that may be suitable for one compressor may create a risk of injury when used on another compressor.
- **Never leave compressor** running unattended.
- **The motor is thermally protected and will automatically shut off when it becomes overheated.** Turn off the switch and start the compressor again after the motor cools.

OPERATION

- Carefully unpack the machine onto a flat surface and check it over. Any defects during transportation must be reported to your dealer.
- Connect one end of the air hose to the air outlet nipple and the other end to your airbrush.
- Carefully plug the compressor into a standard wall outlet.
- Turn the switch on. The compressor will run continuously until you shut it off.
- When restart the compressor during operation, always release the air pressure first and turn on again.

PARTS LIST & DIAGRAM FOR COMPRESSOR



No.	Description	No.	Description
1	Air Filter	11	Cylinder Housing
2	Air Outlet Nipple	12	Connecting Rod
3	Set Screw	13	Counterweight
4	Intermediate Airline	14	Set Screw
5	Cylinder Head	15	Bearing Housing
6	Washer	16	Bearing Housing
7	Valve Plate	17	Bearing
8	Cylinder Block	18	Stationary Motor
9	Washer	19	Cooling Fan
10	Cylinder	20	Motor Housing



WARNING

Some dust created by power sanding, sawing, grinding, drilling, and other construction activities contains chemicals known to the State of California to cause cancer, birth defects or other reproductive harm. Some examples of these chemicals are:

- Lead from lead-based paints
- Crystalline silica from bricks and cement and other masonry products, and arsenic and chromium from chemically-treated lumber.

Your risk from these exposures varies, depending on how often you do this type of work. To reduce your exposure to these chemicals: work in a well ventilated area, and work with approved safety equipment, such as those dust masks that are specially designed to filter out microscopic particles.



Northern Tool + Equipment Co.,
2800 Southcross Drive West
P.O. Box 1499 Burnsville, MN 5337-0499
Made in China