

POWERHORSE™

Owner's Manual

M109292C

ITEM NUMBER: 109292

SERIAL NUMBER: _____

Instructions for Assembly, Testing, Operation, and Servicing

Water Pump Wheel Kit: Outdoor agricultural product used to
move Powerhorse water pumps by hand.

⚠ WARNING

READ and UNDERSTAND the Owner's Manual completely before using this water pump wheel kit.
Assemble, test, and use only in accordance with the Owner's Manual instructions.

Improper use of the water pump could result in serious injury or illness to the operator or nearby persons/animals.

Any Questions, Comments, Problems, or Parts Orders
Call Powerhorse Product Support 1-866-443-2576

Hazard Signal Word Definitions






	<p>This is the safety alert symbol. It is used to alert you to potential personal injury hazards. Obey all safety messages that follow this symbol to avoid possible injury or death.</p>
	<p>DANGER (red) indicates an imminently hazardous situation which, if not avoided, will result in death or serious injury.</p>
	<p>WARNING (orange) indicates a potentially hazardous situation which, if not avoided, could result in death or serious injury.</p>
	<p>CAUTION (yellow) indicates a potentially hazardous situation which, if not avoided, may result in minor or moderate injury.</p>
	<p>CAUTION (yellow) used without the safety alert symbol indicates a potentially hazardous situation which, if not avoided, may result in property damage.</p>

fig01453

Table of Contents

About Your Water Pump	4
Important Safety Information	4
During Assembly	
During Operation	
Unpacking	
Unpacking	5
Unpacking the Manual Bag	5
Assembly	6
Machine Components	8
Operation - Using the Water Pump Wheel Kit	9
Specifications	9
Wheel Kit Exploded View	10
Limited Warranty	11

About Your Water Pump Wheel Kit

Thank you for purchasing your Powerhorse Water Pump Wheel Kit!

About Your Water Pump Wheel Kit

This water pump wheel kit is designed for use with the Powerhorse water pump. It is designed to aid movement, by hand of the water pump unit.

The technical specifications for your water pump wheel kit are provided in the “Specifications” section of this manual.

Follow all safety precautions presented throughout this manual. A summary of important safety information can be found at the end of the manual.

Contact Powerhorse Product Support at 1-866-443-2576 for any questions about the appropriate use of this water pump wheel kit and/or optional accessories.

Warranty Registration:

Please fill in the warranty registration information and have it on hand when you call in on a warranty claim.

Important Safety Information

WARNING

Read and understand **this owner’s manual** completely before using the water pump wheel kit.

Improper use of the water pump wheel kit could result in serious injury for the operator or nearby persons/animals.

----- **DURING ASSEMBLY** -----

- **EXERCISE CAUTION** when installing components. **Follow the steps listed in the assembly section of this manual to properly install the water pump wheel kit.**
- **DO NOT MODIFY** water pump design.

----- **DURING OPERATION** -----

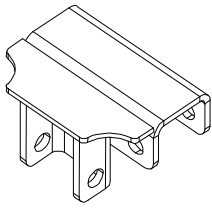
- **MAKE SURE** the tires are fully inflated and in good repair before using the water pump wheel kit. When adding air to the tires, do not over-inflate – serious injury could occur if tire explodes.
- **DO NOT RIDE** or **TRANSPORT** cargo on the water pump wheel kit.
- **TURN OFF** water pump before transporting.
- **INSPECT** and **PREPARE** water pump wheel kit before each use as directed in this manual.

Unpacking the Manual Bag

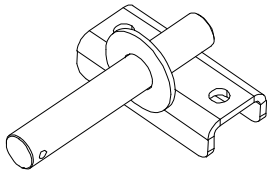
Closely inspect all contents in the shipping carton.

Note that some parts are shipped inside the manual bag.

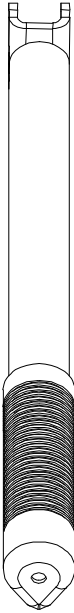
- **If you have damaged components:** Contact the freight company that delivered the unit and file a claim.
- **If you have missing components:** Contact Powerhorse Product Support at 1-866-443-2576.



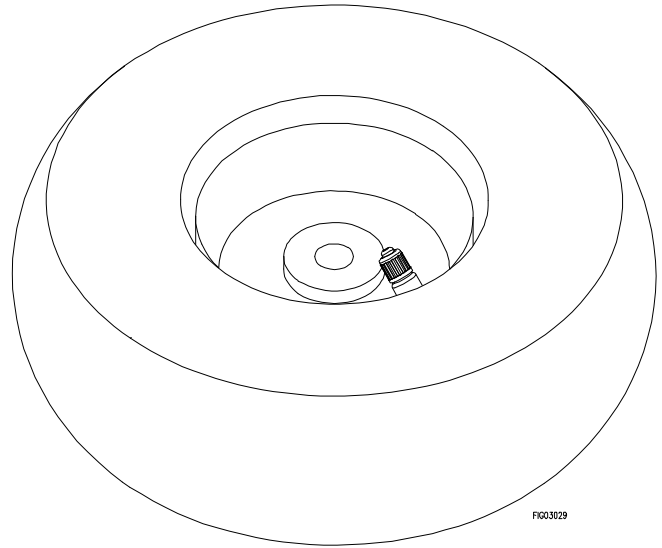
Handle Mount
Qty 1



Axle
Qty 2



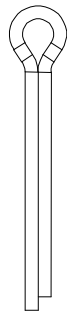
Handle & Grip
Qty 1



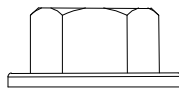
Tire
Qty 2

Unpacking the Manual Bag

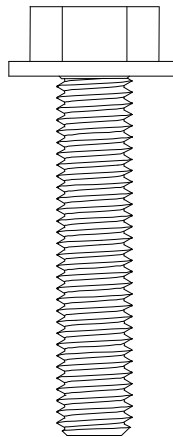
The following items are found in the manual bag.



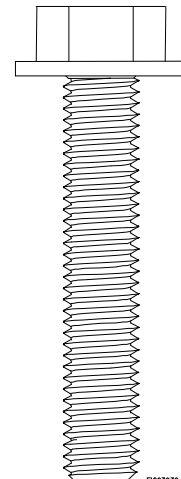
Cotter Pin
Qty 2



M8 Nut
Qty 7



M8 x 40mm Bolt
Qty 6

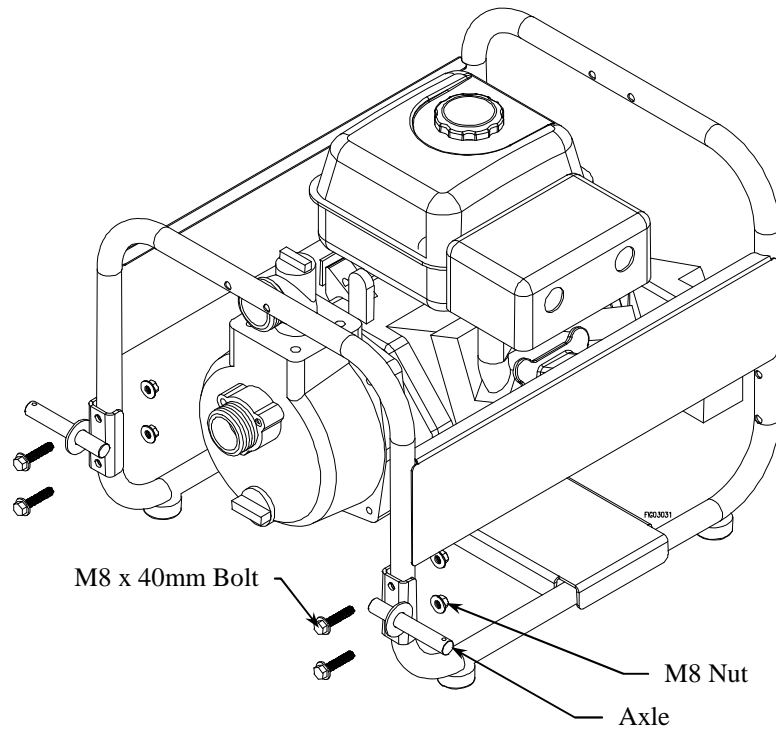


M8 x 45mm Bolt
Qty 1

Assembly

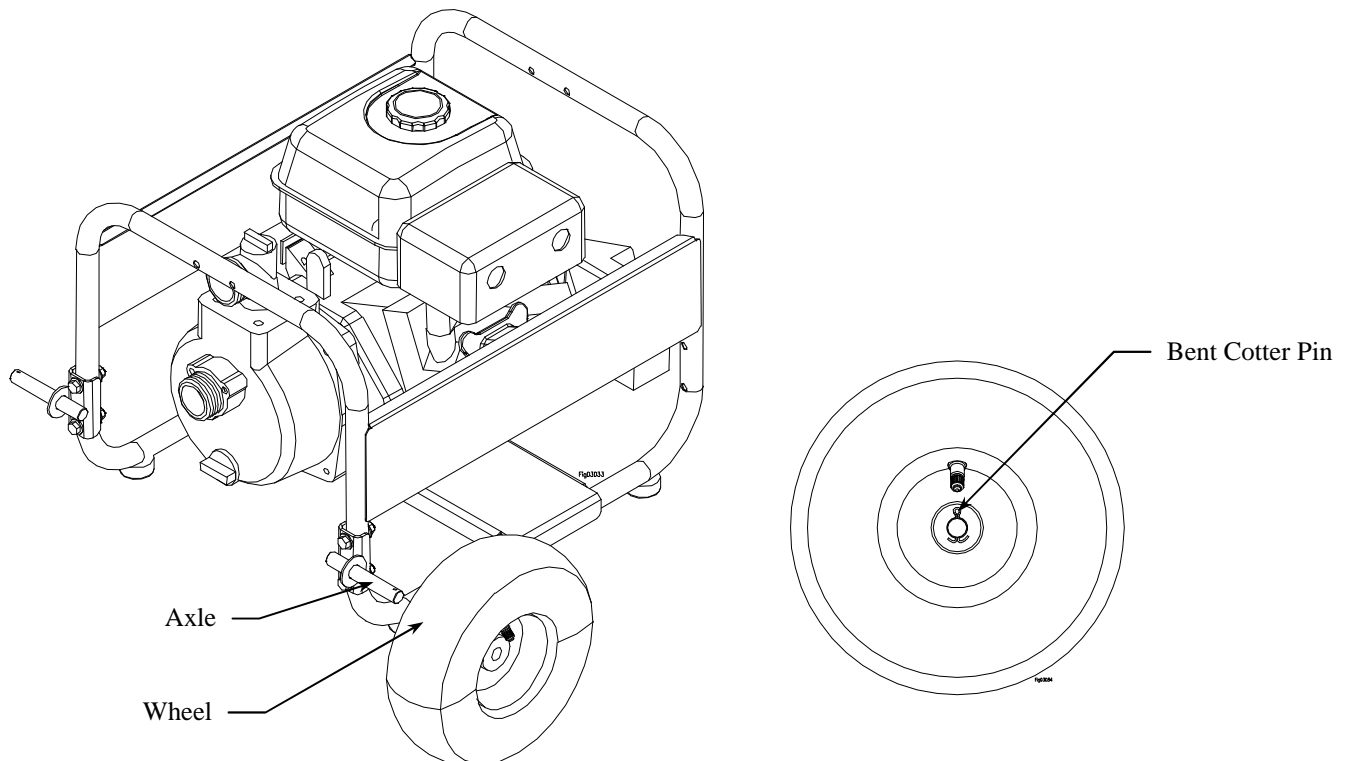
Step 1: Attach one axle to the frame

Attach axles to the right and left side of the frame, as shown in the figure below, using (4) M8 x 40mm bolts and (4) M8 nuts. Tighten bolts to 20 ft-lbs.



Step 2: Attach wheels to axles

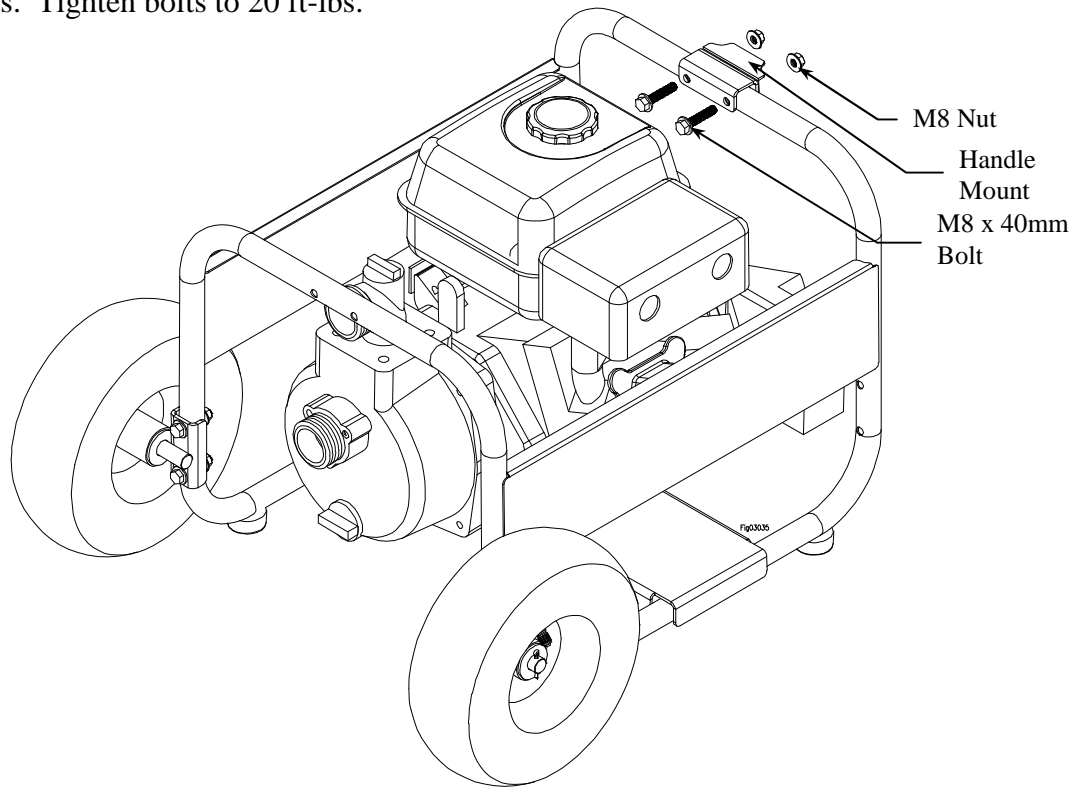
Place wheels onto the axles, insert (1) cotter pin into the each axle hole, and bend to lock the cotter pin in place, as shown in the figure below



Assembly

Step 3: Attach handle mount to the frame

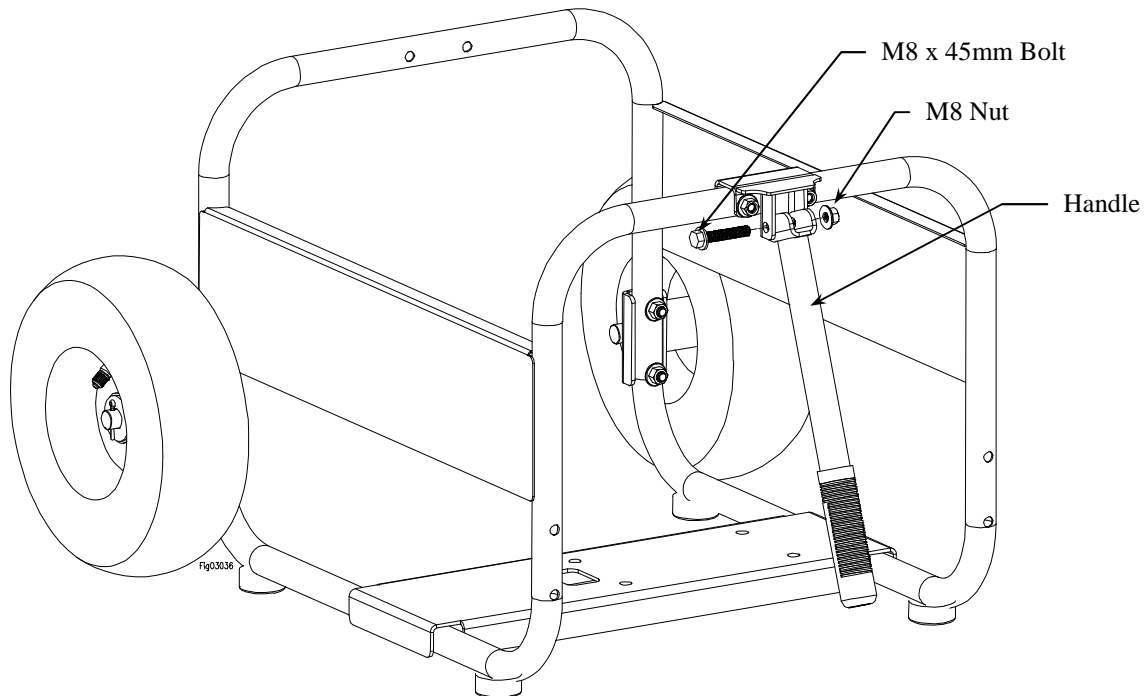
Attach handle mount to the frame, as shown in the figure below, using (2) M8 x 40mm bolts and (2) M8 nuts. Tighten bolts to 20 ft-lbs.



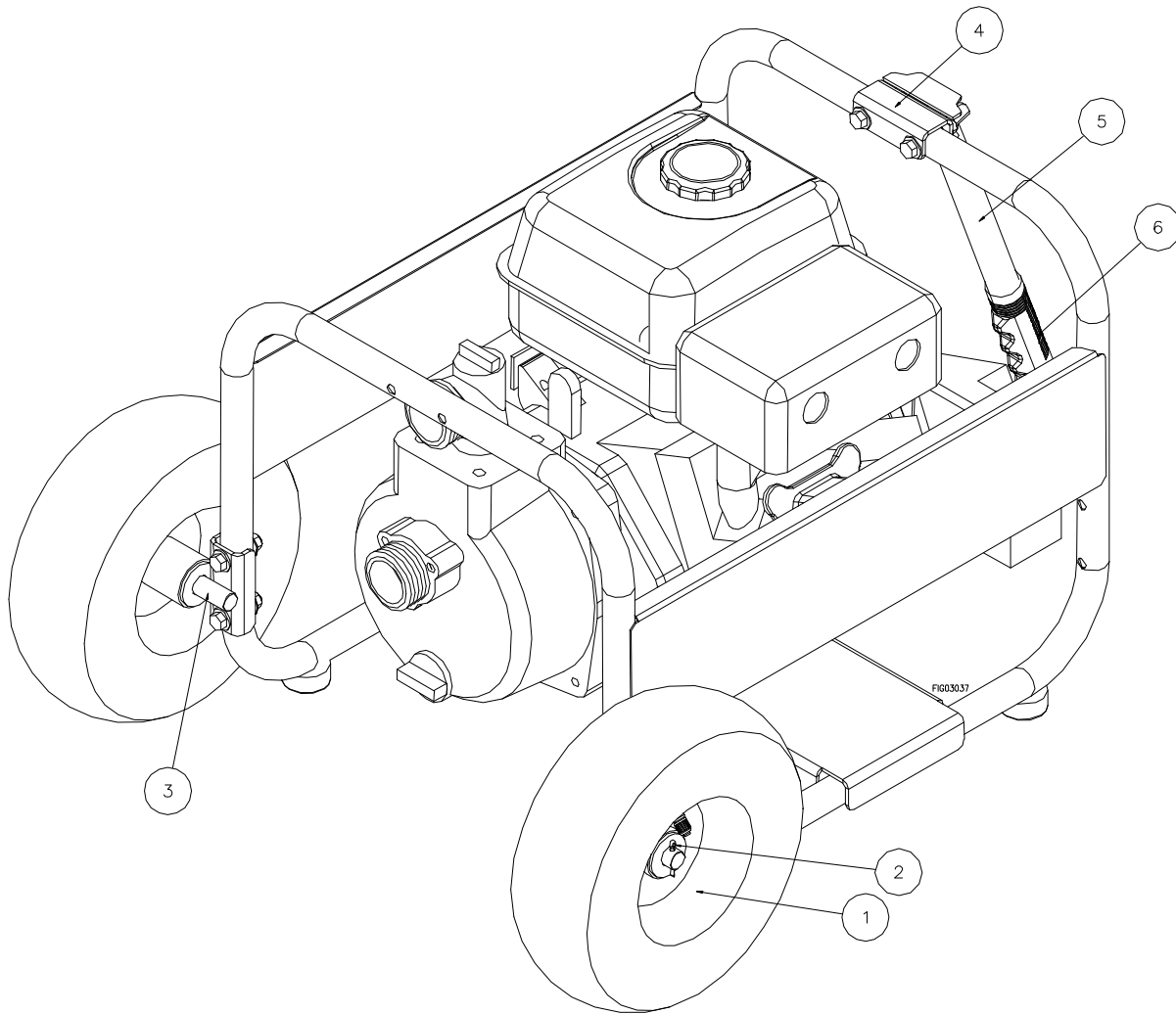
Step 4: Attach handle to handle mount

Attach handle to the frame, as shown in the figure below, using (1) M8 x 45mm bolt and (1) M8 nut. Tighten bolt to 10 ft-lbs.

**Engine and pump have been removed from the figure for clarity.



Machine Components



1. **Wheel:** Pneumatic wheel assembly.
2. **Cotter Pin:** Retains the wheel in position.
3. **Axle:** Fastens the wheel to the frame.
4. **Handle Mount:** Fastens the handle to the frame.
5. **Handle:** Pivots in the handle mount to move out of the way during nonuse.
6. **Grip:** Used to increase grip in wet conditions.

Operation – Using the Water Pump Wheel Kit

Step One: Inspect/Repair

If the water pump wheel kit has been used previously, it must be prepared BEFORE EACH SUBSEQUENT USE.

WARNING

Read instructions below carefully for inspecting and preparing the water pump wheel kit. Damaged or missing components could result in injury to the operator or bystanders.

Important safety rules:

- **Replacement parts.** If a part needs replacement, only use parts that meet the manufacturer's specifications. Replacement parts that do not meet specifications may result in a safety hazard or poor operation of the water pump wheel kit.

1. Review safety information	Review the “Important Safety Information” section provided in this manual.
2. Inspect & repair	Inspect and test the water pump wheel kit thoroughly a. Check Tires for proper pressure level. b. Check to be sure that all nuts and bolts are tight.
3. Transport	Grab the grip on the handle of the wheel kit and PULL the water pump to desired location. DO NOT PUSH the water pump as injury to the operator could result.

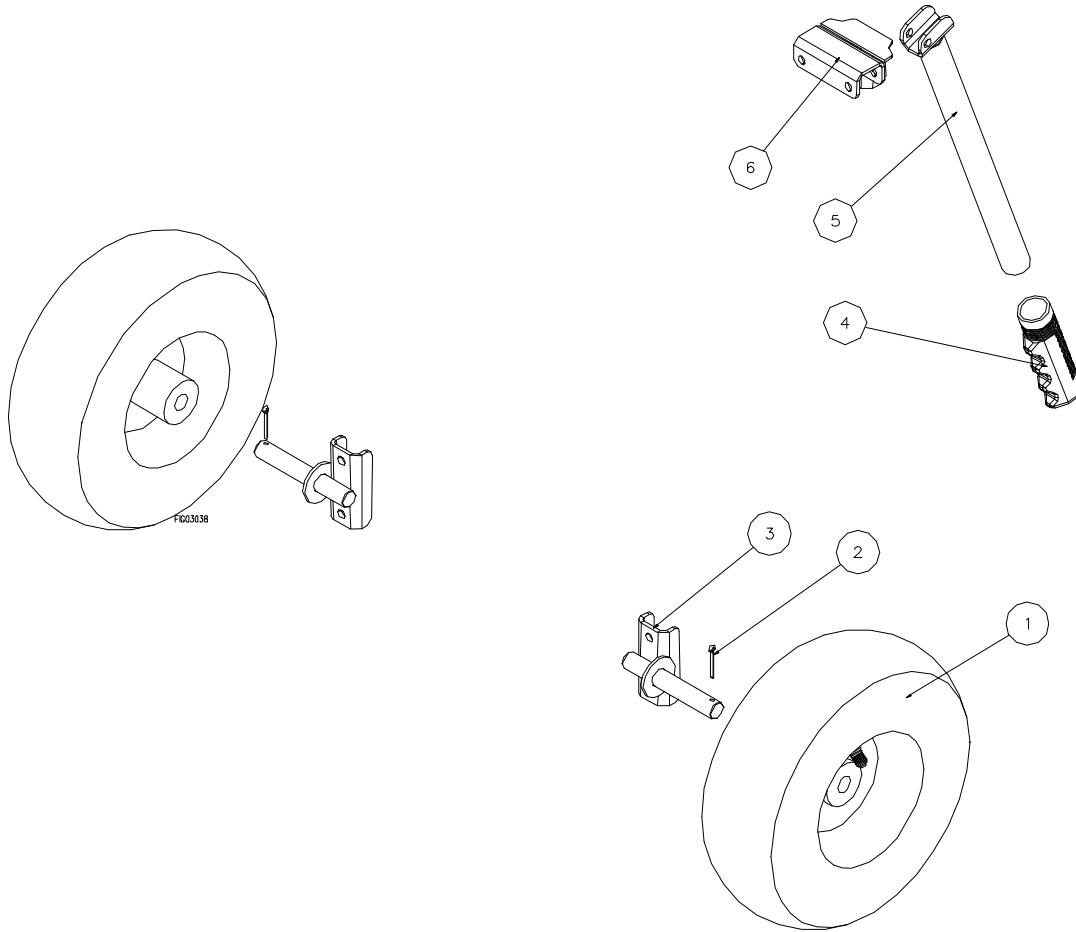
Specifications

109292 – Water Pump Wheel Kit	
Recommended Tire Pressure	14 PSI
Overall Dimensions (boxed)	11.8”L x 12.1”W x 10.6” H
Weight	12 lbs

The manufacturer reserves the right to make improvements in design and/or changes in specifications at any time without incurring any obligation to install them on units previously sold.

Any Questions, Comments, Problems or Parts Orders
Call Powerhorse Product Support 1-866-443-2576

Wheel Kit Exploded View – Rev C



Item	Part Number	Description	Qty.
1	780832	Wheel	2
2	82299	Cotter Pin	2
3	780957	Axle	2
4	781063	Grip	1
5	780967	Handle	1
6	780961	Handle Mount	1

Limited Warranty

Dear Valued Customer:

The Powerhorse Product you just purchased is built with the finest material and craftsmanship. Use this product properly and enjoy the benefits from its high performance. By purchasing a Powerhorse product, you show a desire for quality and durability.

Like all mechanical equipment this unit requires a due amount of care. Treat this unit like the high quality piece of machinery it is. Neglect and improper handling may impair its performance. Please thoroughly read the instructions and understand the operation before using your product.

Limited Warranty

Powerhorse shall warranty any piece of equipment manufactured, or parts of equipment manufactured, to be free from defects in material or workmanship for a period of 90 days from the date of purchase by user. This warranty applies to the original purchaser of the equipment and is non transferable. Verification of purchase is the responsibility of the buyer. Parts will be replaced or repaired at no charge, except when the equipment has failed due to lack of proper maintenance. Any misuse, abuse, alteration or improper installation or operations will void warranty. Determining whether a part is to be replaced or repaired is the sole decision of Powerhorse.

NOTE: Some services performed by parties other than Powerhorse may void warranty.

This warranty covers parts only. It will not provide for replacement of complete products due to defective parts. Components not manufactured by Powerhorse are guaranteed by their manufacturer and can be serviced at factory-authorized locations near you. Any costs incurred due to replacement or repair of items outside of a Powerhorse approved facility is the responsibility of the buyer and not covered under warranty. Powerhorse can supply you with the service center location in your area.

This warranty specifically excludes the following; failure of parts due to damage caused by accident, fire, flood, windstorm, acts of God, applications not approved by Powerhorse in writing, corrosion caused by chemicals, use of replacement parts which do not conform to manufacturer's specifications, and damage caused by vandalism. Additional exclusions: loss of running time, inconvenience, loss of income, or loss of use, including any implied warranty of merchantability of fitness for a specific use.

Warranty does not cover items subject to normal wear such as tires, receptacles or any part subject to direct physical contact by the public. This warranty does not cover any personal injury or damage to surrounding property caused by failure of any part.

This warranty is in lieu of any other warranty expressed or implied and Powerhorse assumes no other responsibility or liability outside that expressed within this warranty.

Please fill in the following information and have it on hand when you call in on a warranty claim.

Customer Number: _____

Date of Purchase: _____

Powerhorse Serial Number: _____

Item Number: _____



POWERHORSE™

Distributed by
Northern Tool + Equipment Co.,
2800 SouthCross Drive West
P.O. Box 1499 Burnsville, MN 55337-0499
Made in China